

# Clinical Directory



One Care Team  
One-Stop Care

# Healthcare Redesigned

### **NUHS Mission**

**To advance health  
by synergising care,  
education and research,  
in partnership with patients  
and the community.**

### **NUHS Vision**

**A Healthy Community  
Shaping Medicine  
Transforming Care**

### **Alexandra Hospital Purpose Statement**

**We redesign healthcare  
with and for humanity.**

**Welcome to**

# **Alexandra Hospital**

**The new Alexandra Hospital experience is designed to meet your needs at every step of your healthcare journey – from prevention to early intervention, consultation, admission, discharge, and post-discharge.**

**Here, care is anchored by a Doctor, leading a One Care Team comprised of Nurses, Allied Health Professionals, Service Associates, Care Managers, Pharmacists, and supported by Specialists.**

**We work closely with our patients, their caregivers and families, as well as those who are well – at home and in the community.**

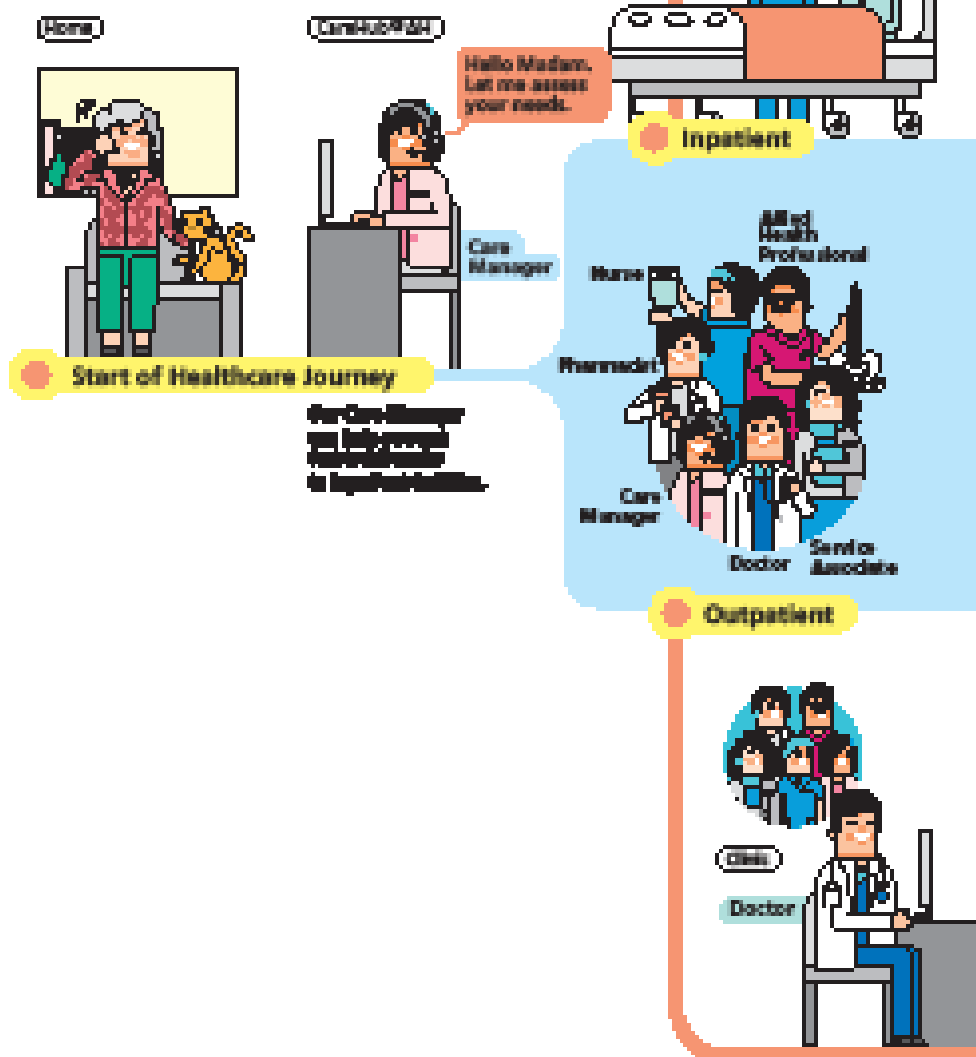
**In inpatient care, services will revolve around a patient who stays in the same hospital throughout his or her hospital time, with one care team providing seamless acute care, sub-acute and rehabilitative care from admission to discharge. This contrasts with the conventional model of patients needing to be transferred from an acute hospital to a community hospital. The intensity and type of care are seamlessly matched to the trajectory of the patient's illness.**

**Our CareHub will run a tele-triage and consultation hotline centre, which draws on the resources and expertise of the entire NUHS and its partners to identify and match care needs with the appropriate sites and providers of care. The hub will help the patients navigate the complex system, facilitate transfers between institutions, institute measures to prevent re-admissions and anchor care at home and in the community.**

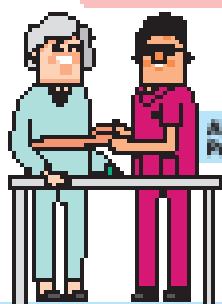
**Beyond Alexandra Hospital, seamless handovers with one identified care team in primary care and the community will become the norm. While being prepared for transition to the community, upon discharge, patients can expect seamless handovers to an identified care team in primary care and the community that will continue to provide holistic care.**

# One Continuous and Integrated Model of Care

At Alameda Hospital, we see to your every need at every step of your healthcare journey - from prevention to early intervention, consultation, education, treatment, rehabilitation, discharge and post-discharge care.



Acute and rehabilitation care are co-located under one roof, avoiding unnecessary transfers.



Allied Health Professional

CareHub 24/7



Care Manager

## One Care Team

You will be managed by a multidisciplinary care team, led by the principal doctor.

## Out-of-Hospital Care

Our Care Manager can help you navigate care by linking you up with resources in the community.

## Community-Centric Care



Hello, let us continue your rehabilitation.

Allied Health Professional



Home

Your outpatient appointments will be consolidated, thus cutting down on multiple visits.

Our community health teams will check in on you, to help you live better in the comfort of your home and community.



# Five Better Programmes, One Redesigned Healthcare Journey:



## Be Better

PREVENTIVE CARE

Take the first step towards health empowerment and prevention with our **Well Programme** by being proactive with screening, exercise and treatment.



## Age Better

ELDER CARE

**Clinic K (Healthy Ageing Clinic)**  
Our **Healthy Ageing Programme** cares for the elderly's mind, mobility and sensory, orthopaedic and other geriatric and social needs holistically.



## Get Better

ADULT CARE

**24-Hour, Walk-in Urgent Care Centre**  
The **FAST Programme** looks at emergency treatment from acute, sub-acute to rehabilitative care at our integrated wards.



## Cope Better

SUPPORTIVE AND PALLIATIVE CARE

Champions for compassionate care and quality of life, at every age and at every stage, our **Supportive and Palliative Care Programme**:

- Enables and empowers everyone to care.
- Encourages caring across boundaries.
- Creates caring systems.
- Helps all to live well before leaving well.



## Live Better

CHRONIC CARE

**Clinic J (Integrated Care Clinic)**  
The **Clinic Programme** led by one doctor and one care team consolidates a patient's multiple conditions and treatment plans including medication and rehabilitation regimens, into one appointment.



<b>P. 08</b>	<b>Foreword</b>
<b>P. 12</b>	<b>Hospital Leads</b>
<b>P. 24</b>	<b>Medical Specialties</b>
<b>P. 38</b>	<b>Surgical Specialties</b>
<b>P. 50</b>	<b>Community Partnership</b>
<b>P. 52</b>	<b>Innovation</b>
<b>P. 54</b>	<b>Doctors</b>
<b>P. 58</b>	<b>Nursing</b>
<b>P. 60</b>	<b>Allied Health</b>
<hr/>	
<b>P. 64</b>	<b>How To Get To And Around Alexandra Hospital</b>

---

# A/Prof Jason Phua

Chief Executive Officer

**D**ear friends, Singapore has one of the fastest ageing populations in the world, and non-communicable chronic diseases account for an increasingly large proportion of the burden of illness. All of us in the healthcare sector face the challenges of having to provide effective and seamless care amidst increasing health and social complexity, and a shrinking workforce. To this end, our National University Health System (NUHS) team took over Alexandra Hospital (AH) in 2018, with the task of helping to redesign healthcare – with and for humanity.

Time flies, and since 2018, we have aggressively revamped our hospital. We have crystallised our integrated general hospital (IGH) model, where the emphasis is on that One patient, One bed, One care team, One principal doctor, One with the community, and Healthcare redesign (OOOOOH). Our five signature clinical programmes – Well, Fast, Chronic, Healthy Ageing, and Palliative Care – are thriving. They are supported by a full suite of medical

and surgical specialties and sub-specialties. Our Urgent Care Centre accepts emergencies 24/7. Our wards handle patients who need acute, subacute, and rehabilitative care. Our clinics, day surgery and main operating theatres, and endoscopy suites are up and running. Our pharmacy, allied health (including rehabilitation, medical social services, dietetics), and diagnostic services (including laboratory, radiology, and cardiac, pulmonary, and neurological investigations) are in full swing.

In 2020, we have worked to increase our number, including those in S.M.A.R.T. wards where the use of technology is maximised. We will mount more novel clinical services. We will ramp up work on teleconsultations and our step-up virtual care centre where persons in need can literally call us for help. We will continue planning for the future Alexandra Campus.

And importantly, we will actively reach out to you – our friends and partners in the community.

We continue to believe that nothing that we do at Alexandra Hospital will make a sustainable

---

difference if we don't work with you. You are the go to professionals for health and healthcare for most people, and we see ourselves playing a supportive role for you. There is so much we can do together, for those in the pink of health, those who are acutely ill, those who are feeling the burden of chronic illnesses, those whose hair is graying, and those at the twilight of their lives. Some of these people are well to do and lead happy lives with their families, while others are financially and socially disadvantaged and live alone in rental flats.

Regardless, imagine the possibilities if together, we can build a healthcare continuum which every person can navigate easily without ever being dropped from the system. Imagine how much easier it will be for these persons and for us healthcare professionals if we know each other so well, and by name, that we can communicate seamlessly and provide shared care together.

I have a sense that because we are pulled in multiple directions, we do not yet work closely enough with

you. And yet, we have so much to share with – and lots more to learn from – you. We will do our best to do so this year and beyond. My mobile number is 9786 4006, and my email address is [jason\\_phua@nuhs.edu.sg](mailto:jason_phua@nuhs.edu.sg). Please feel free to contact me anytime should you need to.

Yours sincerely,



**Associate Professor  
Jason Phua**



---

## A/Prof Khoo See Meng

Chairman Medical Board

**D**ear Colleagues, Alexandra Hospital is a hospital which has been imagined differently. Conventional hospital departments which are based on the training backgrounds of the doctors will not exist in Alexandra Hospital. In its place are programmes and services that are organised around the needs of the patients and created according to the types of patients that the hospital will care for.

This first edition of our Alexandra Hospital's clinical directory presents you a broad picture of how we organise ourselves into five clinical programmes over a single continuum of care, from the well to those requiring end-of-life care. These five key programmes, Well, FAST, Chronic, Healthy Ageing and Palliative Care will form the pillars of the hospital's clinical organisational structure, which will in turn be supported by the surgical, rehabilitative, and urgent care services. Together, they will deliver care through an innovative model where one care team takes charge of each patient and manages the multiple complex co-morbidities to ensure that the care experienced

by our patients is seamless, complementary and coherent across care settings.

Our ambition is to draw on the comprehensive resources and expertise of NUHS, and embrace the necessary complexity of the "community of care" created by the tight collaboration between hospitals, primary care providers and community partners, to deliver care to our patients with the paradoxical simplicity of a single care team, one bed and a named care provider.

This is a hospital that sees its unique mission as generating thought-provoking hesitations in the routines of everyday care delivery rather than simply servicing those routines to deliver care because this to us, is healthcare redesigned.

Yours sincerely,



**Associate Professor  
Khoo See Meng**



# Hospital Leads

Meet our senior team and programme leads – our Alex Leaders who urge us every day to think of ways to improve patient outcomes and provide our community with one seamless healthcare experience. We are inspired by our leadership to constantly care, empower, serve, learn as a team.

We believe in ordinary people coming together with a common mission to do extraordinary things for our community. We can't do this alone.

We need many helping hands like yours, to make our people happier and healthier. We celebrate successes and carry one another's burdens. We learn from one another who are the best in what they do. We help one another grow into successful leaders.

#### **Hospital Leads**

- P. 14 Chief Executive Officer, A/Prof Jason Phua**
- P. 15 Chairman Medical Board, A/Prof Khoo See Meng**
- P. 16 Chief Operating Officer, Mr Jeffrey Chun**
- P. 17 Chief Campus Planning Officer, Ms Grace Chiang**
- P. 18 Chief Nurse, Ms Margaret Lee**
- P. 19 Chief Financial Officer, Ms Doris Wong**
- P. 20 Chief Medical Information Officer, Dr Goh Wei-Ping**
- P. 21 Chief Human Resource Officer, Ms Loke Huay Ean**
- P. 22 Head of Pharmacy, Ms Hooi Pik Yee**
- P. 23 Head of Allied Health, Mr Melvin Poon**

# A/Prof Jason Phua

Chief Executive Officer



**Associate Professor Jason Phua is the CEO of Alexandra Hospital, and is a specialist in Respiratory Medicine and Intensive Care Medicine.**

**He is the Deputy Chair of the National Intensive Care Unity Repository (NICUR), the Chair of the Asia Ventilation Forum (AVF), and the Secretary of the Asian Critical Care Clinical Trials (ACCCT) Group. He is the former Head of the Division of Respiratory and Critical Care Medicine in National University Hospital, the former President of the Society of Intensive Care Medicine (Singapore).**

#### Areas of Interest

- Intensive care medicine
- Clinical research

---

#### Academic Qualifications

- MBBS (Singapore)
- MRCP (United Kingdom)



Email

[jason\\_phua@nuhs.edu.sg](mailto:jason_phua@nuhs.edu.sg)



Phone

9786 4006



# A/Prof Khoo See Meng

Chairman Medical Board



**Associate Professor Khoo See Meng is the Chairman Medical Board of Alexandra Hospital. He is a specialist in Respiratory and Sleep Medicine, and is the Director of the Sleep Medicine service, NUH, and the Head of Division of Acute Care, University Medicine Cluster, NUH.**

**A/Prof Khoo served as the Programme Director for NUHS Internal Medicine Residency Programme from 2009 to 2017 and during this time, he received multiple teaching excellence awards. In his role as a clinician educator, A/Prof Khoo continues to contribute actively to both undergraduate and postgraduate teaching and remains a mentor to many today.**

## Areas of Interest

- Sleep medicine
- Respiratory medicine
- Medical education

---

## Academic Qualifications

- MBBS (Melbourne)
- MRCP (United Kingdom)
- FRCP (Edinburgh)
- MMED (Sleep Medicine) (Sydney)
- Master of Health Professions Education (MHPE)



Email

see\_meng\_khoo@nuhs.edu.sg



Phone

9637 3094

# Mr Jeffrey Chun

Chief Operating Officer



Mr Jeffrey Chun is the Chief Operating Officer of Alexandra Hospital. Holding a Bachelor of Science (Computer Science and Information Systems) from the National University of Singapore, Jeffrey completed his executive education at the Chicago Booth School of Business.

Jeffrey's experience spans over many years, with stints in sales and business, particularly in information technology. He later joined the healthcare sector, becoming the Director for Corporate Development and Board Secretary at the NHG. At the NUH, he served as its Deputy COO. Jeffrey currently oversees the Office of Patient Experience, Data Analytics and Health Informatics Management, Quality, Agile and Lean Management, and the Materials Management Department at Alexandra Hospital.

## Areas of Interest

- Horticulture and botany
- Culinary arts and gastronomy
- Organisational culture evolution

---

## Academic Qualifications

- Bachelor of Science in (Information Systems)



Email

Jeffrey\_chun@nuhs.edu.sg



Phone

9147 3741

# Ms Grace Chiang

Chief Campus Planning Officer



**Ms Grace Chiang leads the AH Campus Development team, to plan and build a future Alexandra Campus, for the new integrated general hospital, due to open in 2028.**

**Grace is a veteran builder and planner, having helped with KK Women's and Children's Hospital (KKH) and as a Project Director for the development of the NUH Medical Centre. She was here at Alexandra Hospital with the Khoo Teck Puat Hospital (KTPH) team, and was the COO of National Healthcare Group (NHG) Polyclinics and a Senior Director with the NHG Regional Health System. She was National University Hospital's (NUH) Director of Operations for Inpatient Operations and Specialised Support Services and Senior Director for Environmental Services. She was also the Group Chief Infrastructure Officer and the Group COO for Hospitality and Biomedical Engineering for NUHS.**

## **Academic Qualifications**

- Master of Health Services Administration (The George Washington University)
- Bachelors of Architectural Studies (National University of Singapore)
- Graduate Diploma in Training and Management Development (Singapore Institute of Management)



**Email**

[grace\\_chiang@nuhs.edu.sg](mailto:grace_chiang@nuhs.edu.sg)



**Phone**

**9235 7997**

# Ms Margaret Lee

Chief Nurse



**Ms Margaret Lee is the Chief Nurse of Alexandra Hospital. Margaret joined the NUHS family in August 2001, and has been a part of Liver Transplant Programme, Medical Intensive Care Unit, and Nursing Quality and Nursing Administration.**

**She was the Assistant Director of Nursing, managing wards and centres within the University Medicine Cluster (UMC) at NUH. At the national level, Margaret has received the MOH Nurses' Merit Award in 2014 for her dedication towards nursing, and was conferred the National Day Commendation Award in 2016.**

## Areas of Interest

- Leadership development
- Innovation
- Organisational learning and change management

---

## Academic Qualifications

- M.H.Sc (Management)
- Certified Professional in Healthcare Quality (CPHQ)
- Post-Graduate Diploma in Higher Education (PGDHE)
- Bachelor of Nursing
- Advanced Diploma in Nursing (Critical Care)
- Diploma in Nursing



Email

[margaret\\_lee@nuhs.edu.sg](mailto:margaret_lee@nuhs.edu.sg)



Phone

6370 6580

# Ms Doris Wong

Chief Financial Officer



**Ms Doris Wong is the Chief Financial Officer at Alexandra Hospital. Doris formulates, reviews, and executes business and financial plans, aligning them with defined strategies and business objectives. She and her team work with partners to ensure that appropriate funding structures are instituted to support new care models and hospital operations, and enable sustainability.**

**Prior to NUHS, Doris had many years of finance leadership experience in business support, controllership, planning and reporting, cost analytics, and operations startups. She was the Operations Finance Controller for a large semiconductor company managing two high technology fabs and startups.**

## Areas of Interest

- People development
- Finance analytics

---

## Academic Qualifications

- Bachelor of Accountancy



Email

[doris\\_ss\\_wong@nuhs.edu.sg](mailto:doris_ss_wong@nuhs.edu.sg)



Phone

6370 6165

# Dr Goh Wei-Ping

Chief Medical Information Officer



**Dr Goh Wei-Ping is the Chief Medical Information Officer of Alexandra Hospital. He also serves as its Vice Chairman Medical Board, Medical Affairs-Human Resource, and spearheads its efforts in the implementation of the Next Generation Electronic Medical Records (NGEMR) as its Institutional Lead.**

**Dr Goh graduated from the National University of Singapore in 2002, and later went on to attain an MBA from the University of Chicago Booth School of Business. Over the course of his medical career, he has served under the National Healthcare Group-administered Alexandra Hospital, as well as the National University Hospital (NUH), where he also holds the title of Principal Resident Physician.**

#### **Areas of Interest**

- Medical Informatics
  - Medical Education
  - Acute Medicine
  - Quality Improvement in Healthcare
- 

#### **Academic Qualifications**

- MBBS (Singapore)
- MBA (United States)



**Email**

**wei\_ping\_goh@nuhs.edu.sg**



**Phone**

**9277 2388**

# Ms Loke Huay Ean

Chief Human Resource Officer



Ms Loke Huay Ean is the Chief Human Resource Officer at Alexandra Hospital, developing and implementing progressive people strategies and plans that support the goals of the hospital, in developing new models of care and building a strong talent pipeline.

Huay Ean joined the NUHS as Manager, Human Resource in 2009. She supported the Senior Director, Human Resource in setting up the HR function for the Corporate Office, and partnered the directors in strengthening and building their team capabilities. She had also supported various NUHS harmonisation projects, implemented engagement platforms and developed the cluster's Pinnacle Awards.

Prior to joining NUHS, she had more than 8 years of human resource experience in both private sector and government-linked companies.

#### Areas of Interest

- Leadership and learning
- Culinary arts

---

#### Academic Qualifications

- Bachelor of Business Administration



Email

huay\_ean\_loke@nuhs.edu.sg



Phone

9820 0748

# Ms Hooi Pik Yee

Head of Pharmacy



**Ms Hooi Pik Yee is the Head of Pharmacy at Alexandra Hospital. She leads the Pharmacy Division, working with clinical teams to develop, implement and maintain high standards of care through medicine.**

**Pik Yee has been the Chairperson of NUH Pharmacy and Nursing Quality Improvement Committee, implementing initiatives that addressed safe and effective medication management. She has also served as the co-chairman of NUH Insulin Safety Committee, leading a team to work towards improving insulin safety, and was a member of the MOH Workgroup for Job Redesign of Pharmacy Technicians. In 2018, she was awarded the National Day Commendation Medal.**

## Areas of Interest

- Medication reconciliation
- Osteoporosis
- Medication safety
- Process improvement
- Outreach programmes

---

## Academic Qualifications

- BSc (Pharmacy) (Glasgow)
- MSc (Pharmacy) (Australia)



**Email**  
**pik\_yee\_hooi@nuhs.edu.sg**



**Phone**  
**6370 6695**



# Mr Melvin Poon

Head of Allied Health



**Mr Melvin Poon is the Head of Allied Health at Alexandra Hospital. He leads strategies for the development and continuous improvement of the services and professions of the Allied Health Department, comprising of rehabilitation, respiratory therapy, optometry, audiology, dietetics, medical social work, diagnostic imaging, and laboratory medicine.**

**Melvin joined NUH in 2001 as a Medical Social Worker. He led the Endocrine and Renal teams, and was responsible for liaison with internal and external parties in strategic development of social work delivery.**

## **Areas of Interest**

- Working with patients with chronic diseases
- Kidney transplantation cases
- Diabetic cases

---

## **Academic Qualifications**

- B.A. (Social Work, Sociology)
- Post-grad training in Family Therapy



**Email**

**melvin\_poon@nuhs.edu.sg**



**Phone**

**9101 0145**

# Medical Specialties

We believe that care should not be episodic and our patients should not be defined by their diseases.

Here at Alexandra Hospital, we have developed five key person-centric, multi-disciplinary, and symbiotic clinical programmes that span the continuum of care:

- Well Programme to help our community Be Better;
- FAST Programme for inpatient acute, subacute, and rehabilitative care to help our patients Get Better;
- Chronic Programme to help our patients with multiple conditions Live Better;
- Healthy Ageing Programme to help middle-aged and elderly persons Age Better;
- Supportive and Palliative Care Programme to help our patients and families Cope Better.

Together with our leads and care teams, we want to deliver care that matters to better the lives of our patients and their families.

## **Medical Specialties**

- P. 26 Be Better**
- P. 28 Get Better**
- P. 30 Live Better**
- P. 32 Age Better**
- P. 34 Cope Better**



The Well Programme focuses on workplace health, primary prevention and the promotion of health and wellness within our community, helping them Be Better.

Head of Well Programme

# Dr Goh Lay Hoon

Senior Consultant



Dr Goh Lay Hoon is the Head of the Well Programme at Alexandra Hospital. She will extend the frontiers of health screening and health promotion programmes into the community. Dr Goh plays a key role in championing Total Workplace Safety and Health (TWSH) initiatives as well as health promotion and health screening programmes for the staff of Alexandra Hospital.

Dr Goh is a Senior Consultant and Research Director, at the NUHS Department of Family Medicine. As assistant professor in the NUS Yong Loo Lin School of Medicine, she is also involved in teaching, curriculum setting and assessment of medical students. She is a House Mentor in the School, and is the Lead for programmes involving primary care and inter-professional education for medical students.

## Areas of Interest

- Health care models
- Medical education
- Preventive health

---

## Academic Qualifications

- MBBS (Singapore)
- MMED (Fam Med) (Singapore)
- FCFP (Singapore)
- Master of Clinical Epidemiology with Distinction (Newcastle, Australia)
- Graduate Diploma in Family Practice Dermatology (Singapore)
- Graduate Diploma in Geriatric Medicine (Singapore)



Email

[lay\\_hoon\\_goh@nuhs.edu.sg](mailto:lay_hoon_goh@nuhs.edu.sg)



The FAST Programme caters to patients who are acutely unwell with urgent care needs to help them Get Better. From our Urgent Care Centre, to the inpatient stay, to rehabilitative care, our model of care is one that facilitates a seamless transition of care provided by one dedicated care team in the integrated ward setting.

Head of Department of Medicine  
Head of FAST Programme

# Dr Satya PK Gollamudi

Senior Consultant



**Dr Satya Gollamudi is the Head of Medical Services, and the Head of the FAST Programme at Alexandra Hospital. He is also a Senior Consultant in the Division of Advanced Internal Medicine, NUH.**

**Dr Satya completed his Residency in Philadelphia, and later practiced as a board-certified Internal Medicine physician in North Shore Medical Centre in Salem, Massachusetts, where he focused on inpatient Acute Care and in teaching resident physicians. During this time, he also served as the Assistant Clinical Professor of Medicine at Tufts University School of Medicine, Boston.**

#### Areas of Interest

- Acute care
- Clostridium difficile infection
- Use of technology in medical education
- Flipped classroom model in medical education

---

#### Academic Qualifications

- MBBS (India)
- MPH (Kentucky)



[satya\\_pk\\_gollamudi@nuhs.edu.sg](mailto:satya_pk_gollamudi@nuhs.edu.sg)



The Chronic Programme is focused on helping our patients with multiple complex co-morbidities Live Better through our flagship programme – the Integrated Care Clinic (I-Care Clinic), where one doctor and one care team manages the patient holistically to reduce fragmentation, polypharmacy and multiple specialist visits.



Head of Chronic Programme

# Dr Teng Gim Gee

Senior Consultant



**Dr Teng Gim Gee is the Head of the Chronic Programme, and piloted the concept of the Integrated Care Clinic at Alexandra Hospital. She is passionate about the generalist model of care and enjoys working with the growing AH family.**

**Dr Teng completed her residency and fellowship in the US and is board certified in Internal Medicine and Rheumatology. She joined NUH in 2007 and had served as an Internal Medicine core faculty and Programme Director of NUHS Rheumatology Senior Residency before she became Head of Division, Rheumatology. She completed her Masters of Clinical Investigation at National University of Singapore in 2012 and has significant contribution to the research in gout and scleroderma in Singapore.**

#### Areas of Interest

- Epidemiology and outcomes of gout
  - Systemic sclerosis and inflammatory arthritis
- 

#### Academic Qualifications

- MBBS (Singapore)



[gim\\_gee\\_teng@nuhs.edu.sg](mailto:gim_gee_teng@nuhs.edu.sg)



The Healthy Ageing Programme focuses on helping our elderly Age Better by taking a holistic approach towards addressing their mind, mobility, sensory and social needs.

Head of Healthy Ageing Programme

# Dr Santhosh Kumar Seetharaman

Senior Consultant



**Dr Santhosh is the Head of the Healthy Ageing Programme, focused on the health and social needs of the elderly. He is a Senior Consultant with the Division of Geriatric Medicine, NUH.**

**Dr Santhosh underwent specialty training in Geriatric Medicine and General Internal Medicine in London, and took a year to pursue his interest in Stroke at St. Thomas' Hospital, London. Upon completing his training, he worked at The Royal Berkshire NHS Foundation Trust, Reading, before eventually returning to Singapore, where he became the Programme Director of NUHS Geriatric Medicine Senior Residency Programme.**

#### Areas of Interest

- Eldercare
- Stroke
- Medical education

---

#### Academic Qualifications

- MBBS (India)
- MRCP (United Kingdom)



[santhosh\\_seetharaman@nuhs.edu.sg](mailto:santhosh_seetharaman@nuhs.edu.sg)



Core to the programme is to be champions for compassionate care and quality of life, at every age and at every stage to help our patients and their families Cope Better.

We want to:

- Enable and empower everyone to care.
- Encourage caring across boundaries.
- Create caring systems.
- Help all to live well before leaving well.

Head of Supportive and Palliative Care Programme

# Dr Yong Woon Chai

Senior Consultant



Dr Yong Woon Chai is the Head of the Supportive and Palliative Care Programme at Alexandra Hospital, aimed at championing compassionate care and quality of life for patients receiving palliative care.

Dr Yong is also a Senior Consultant in the Division of Palliative Care at the National University Cancer Institute, Singapore (NCIS). She has also served as a Senior Clinical Lecturer at the Yong Loo Lin School of Medicine at the National University of Singapore (NUS), as well as a Visiting Consultant at St. Luke's Hospital.

She believes in strengthening collaborative work with various community partners, helping patients Cope Better with end-stage illnesses.

## Areas of Interest

- Interface between cancer and frailty

---

## Academic Qualifications

- MMBS (United Kingdom)
- MRCP (United Kingdom)
- M Med (Int Med)
- FAMS



[woon\\_chai\\_yong@nuhs.edu.sg](mailto:woon_chai_yong@nuhs.edu.sg)

# Surgical Specialties

Alexandra Hospital has a team of experienced and dedicated surgeons and anaesthetists who offer comprehensive general surgical and orthopaedic care services including minimally invasive surgery, surgical endoscopy, ENT (Ear, Nose, Throat), Ophthalmology, Joint Replacement and Reconstruction Surgery.

The hospital is equipped with an Urgent Care Centre which operates 24/7, Integrated Care Clinics (I-Care Clinics), integrated wards, major operating theatres, day surgery centre, Anaesthesia Outpatient Consultation Clinic and supported by diagnostic radiology, clinical laboratories, day surgery facilities and the endoscopy centre.

**Surgical Specialties**

**P. 38 Surgical and Operating Theatre Services**

**P. 39 General Surgery**

**P. 40 Ophthalmology**

**P. 41 Orthopaedic Services**

**P. 42 Otolaryngology (Ear, Nose & Throat) - Head and Neck Surgery**

# Surgical and Operating Theatre Services



Head of Surgical and Operating Theatre Services

## Dr Wong Weng Hoa

Senior Consultant



**Dr Wong Weng Hoa is the Head of Surgical and Operating Theatre Services at Alexandra Hospital. He is also the Clinical Director of the Department of Anaesthesia at NUH.**

**Dr Wong's experiences include undergoing a one-year fellowship at the University of California, Los Angeles, one of the busiest liver transplant centres in the United States, in 2001. He has also served as the vice-chairman of the OT committee at NUH.**

### Areas of Interest

- Anaesthesia for liver transplantation
- OT management

---

### Academic Qualifications

- MBBS, MMed (Anaesthesia)



**weng\_hoa\_wong@nuhs.edu.sg**



# General Surgery



Head of General Surgery

## Dr Asim Shabbir

Senior Consultant



Dr Asim Shabbir is the Head of General Surgery at Alexandra Hospital. He has been a Senior Consultant in the Division of General Surgery at NUH.

Dr Asim completed his basic and advanced surgical training in Singapore. He was awarded fellowships from Royal College of Surgeons of Edinburgh and did clinical fellowships in South Korea and Taiwan, focusing on gastric cancer management and metabolic surgery respectively.

He has been a post-graduate director for the department of Surgery at NUH, coordinating the surgical academic activities for the clinical foundation scheme for undergraduate medical students of the National University of Singapore.

### Areas of Interest

- Upper gastrointestinal surgery
- Bariatric and metabolic surgery
- Advanced endoscopy
- Laparoscopic surgery

---

### Academic Qualifications

- MBBS (Pakistan)
- MMed (Singapore)
- FRCS (Edinburgh)



Email  
[suras@nuhs.edu.sg](mailto:suras@nuhs.edu.sg)

# Ophthalmology



Head of Ophthalmology

## Dr Paul Zhao Songbo

Senior Consultant



**Dr Paul Zhao is the Head of Ophthalmology at Alexandra Hospital. He is also a Senior Consultant in the Department of Ophthalmology at NUH.**

Dr Zhao underwent basic and advanced specialty training in Ophthalmology in Singapore before pursuing his retina fellowship at Queen Mary Hospital in Hong Kong. His sub-specialisation is in vitreo-retinal disease, and he performs retina surgery and cataract surgery.

### Areas of Interest

- Age-related macular degeneration
- Retinal vascular disorders
- Diabetic eye disease
- Retinal dystrophies
- Intraocular infections

---

### Academic Qualifications

- MBBS (Singapore)
- MRCSEd
- MMed



Email

[paul\\_songbo@nuhs.edu.sg](mailto:paul_songbo@nuhs.edu.sg)

# Orthopaedic Surgery



Head of Orthopaedic Surgery

## Prof James Hui

Senior Consultant



Professor James Hui is the Head of Orthopaedic Surgery at Alexandra Hospital. He completed his medical degree at the National University of Singapore, and subsequently underwent surgical and orthopaedic training at the National University Hospital.

Prof Hui is a fellowship-trained paediatric orthopaedic surgeon, having spent a year in Australia on a paediatric orthopaedic fellowship, and is actively involved in undergraduate and postgraduate teaching at NUS.

His special areas of interest are the care, rehabilitation and surgical treatment of paediatric musculoskeletal problems such as hip dysplasia and dislocation, foot deformities, spinal deformities, limb length discrepancies and neuromuscular disorders such as Cerebral Palsy, Spina Bifida, and Muscular Dystrophy.

### Areas of Interest

- Glenoid version in children with Erb's palsy
- Gait analysis in cerebral palsy
- Prevalence of scoliosis in Singapore

---

### Academic Qualifications

- MBBS (Singapore)
- FRCS (UK)
- FAMS (Singapore)



Email

[james\\_hui@nuhs.edu.sg](mailto:james_hui@nuhs.edu.sg)

# Otolaryngology (Ear, Nose & Throat)- Head & Neck Surgery



Head of Otolaryngology (Ear, Nose & Throat) - Head & Neck Surgery

## A/Prof Mark Thong Kim Thye

Senior Consultant



Associate Professor Mark Thong is Head of Otolaryngology (Ear, Nose & Throat) - Head & Neck Surgery at Alexandra Hospital. He has also served as a Senior Consultant with the Department of Otolaryngology at the National University Hospital.

A/Prof Thong graduated from the Faculty of Medicine, National University of Singapore in 1996. After completing his Otolaryngology residency in Singapore in 2006, he proceeded onto subspecialty training in Rhinology and Sinus Surgery as a clinical fellow at the Lahey Clinic, Massachusetts, USA.

A/Prof Thong is also an Assistant Professor with the Yong Loo Lin School of Medicine, National University of Singapore, where he is involved in teaching medical undergraduates, mentoring junior doctors, and delivering lectures or being a surgical instructor at local or regional conferences.

### Areas of Interest

- Nasal allergy
- Nasal obstruction
- Nose bleeding
- Sinus infections
- Sino-nasal polyps and skull base tumours

---

### Academic Qualifications

- MBBS (Singapore)
- MRCS (Edinburgh)
- MMed (ORL)
- DO-HNS (England)
- FAMS(ORL)



Email

[mark\\_thong@nuhs.edu.sg](mailto:mark_thong@nuhs.edu.sg)



# Diagnostic Imaging

Head of Diagnostic Imaging

## Dr Sachin Agrawal

Senior Consultant



Dr Sachin Agrawal is the Head of Diagnostic Imaging at Alexandra Hospital. He has also served as a Senior Consultant at the Department of Diagnostic Imaging, National University Hospital, as well as at the National University Cancer Institute, Singapore.

Dr Sachin obtained his medical degrees, including his basic radiology training, from the Grant Medical College, Mumbai (MBBS). He later completed his advanced specialist training in Diagnostic Radiology at the NUH. He is a Fellow of the Royal College of Radiology, United Kingdom and a Diplomate of the National Board (New Delhi).

### Areas of Interest

- Musculoskeletal imaging
- Education and training of radiology residents

---

### Academic Qualifications

- MMMBS (India)
- FRCR (UK)
- DNB (India)
- DMRD (India)
- DMRE (India)



[swee\\_tian\\_quek@nuhs.edu.sg](mailto:swee_tian_quek@nuhs.edu.sg)

# Laboratory Medicine

Head of Laboratory Medicine

## Dr Ong Lizhen

Consultant



**Dr Ong Lizhen is the Head of Laboratory Medicine at Alexandra Hospital.**

**Dr Ong is also a Consultant specialising in Clinical Chemistry with the Department of Laboratory Medicine at the National University Hospital.**

### Areas of Interest

- Endocrine related testing
- Myeloma related testing
- Medical technologist education
- Metabolic related testing

---

### Academic Qualifications

- MBBS (Singapore)
- MRCP (United Kingdom)
- MMed (Internal Medicine)
- FRCPath (United Kingdom)



**lizhen\_ong@nuhs.edu.sg**

# Emergency Medicine

Head of Urgent Care Centre

## Dr Keith Ho

Senior Consultant



**Dr Keith Ho is the Head of the Urgent Care Centre at Alexandra Hospital, and a Senior Consultant in the Emergency Medicine Department at NUH.**

**Dr Ho's area of interest is in Disaster Medicine. He did a fellowship with the Centre for Disaster Medical Services at the University of California, Irvine, and has served as the director of emergency preparedness for the Emergency Department, and as the chief hospital planner and co-ordinator for mass casualty incidents.**

**As a member of the core faculty for NUHS Emergency Medicine Residency programme, Dr Ho contributes actively to both undergraduate and postgraduate teaching through medical simulation.**

### Areas of Interest

- Disaster medicine
- 

### Academic Qualifications

- MBBS (Singapore)
- MRCSEd (A&E)
- MMed (A&E) (Singapore)
- EMDM
- FAMS



Email

[weng\\_hoe\\_ho@nuhs.edu.sg](mailto:weng_hoe_ho@nuhs.edu.sg)



# Rehabilitation Medicine

Head of Rehabilitation Medicine

## Dr Effie Chew

Senior Consultant



**Dr Effie Chew is the Head of Rehabilitation Medicine at Alexandra Hospital, and a Senior Consultant in Rehabilitation Medicine, in the Division of Neurology, NUH.**

**Dr Chew graduated from the University of Melbourne, Australia, and is a member of the Royal College of Physicians.**

**She completed her Advanced Specialist Training in Rehabilitation in Singapore and went on to complete her Fellowship in Clinical Neurorehabilitation at Spaulding Rehabilitation Hospital, Harvard Medical School.**

### Areas of Interest

- Non-invasive brain stimulation for neuromodulation and neurorecovery
- Neuropharmacology for cognitive recovery in traumatic brain injury
- Robotics and motor learning in recovery post-stroke

---

### Academic Qualifications

- MBBS (Melbourne)
- MRCP (United Kingdom)
- FAMS



[effie\\_chew@nuhs.edu.sg](mailto:effie_chew@nuhs.edu.sg)

# Intensive Care Medicine

Director of Intensive Care Unit

## Dr Liew Mei Fong

Consultant



**Dr Liew Mei Fong is the Director of the Intensive Care Unit (ICU) and the Deputy Head of the FAST Programme at Alexandra Hospital.**

**She is a Consultant with the Division of Respiratory and Critical Care Medicine at NUH.**

**Dr Liew underwent specialist training in both Respiratory Medicine and Intensive Care Medicine in Singapore and has a keen interest in Critical Care Medicine, severe asthma, bronchiectasis and pulmonary hypertension.**

### Areas of Interest

- Critical care medicine
- Bronchiectasis
- Pulmonary hypertension

---

### Academic Qualifications

- MBBS (Singapore)
- MRCP (United Kingdom)
- MMed (Internal Medicine) (Singapore)



Email

[mei\\_fong\\_liew@nuhs.edu.sg](mailto:mei_fong_liew@nuhs.edu.sg)

# Endoscopy

Director of Endoscopy Centre

## Dr Cheong Wai Kit

Senior Consultant



Dr Cheong Wai Kit is the Director of the Endoscopy Centre at Alexandra Hospital, and has also served as a Senior Consultant in the Division of Surgical Oncology (Colorectal Surgery), NCIS, and Division of Colorectal Surgery, NUH.

Dr Cheong graduated from the University of Malaya in 1990, and obtained his postgraduate qualification from the Royal College of Surgeons of Edinburgh and Royal College of Physicians and Surgeons in 1997. He is also a Fellow of the Academy of Medicine of Singapore.

He is also the Clinical Lecturer at the Yong Loo Lin School of Medicine, NUS, and also heads the Colorectal Oncology Tumour Group at NCIS.

### Areas of Interest

- Recurrent and advanced colorectal cancer
- Diagnostic and therapeutic endoscopy

---

### Academic Qualifications

- MBBS (Malaysia)
- FRCS (Edinburgh)
- FRCS (Glasgow)
- FAMS



Email

[frances\\_lim@nuhs.edu.sg](mailto:frances_lim@nuhs.edu.sg)

# Community Partnership

The Community Partnership team promotes a health-empowering community through the engagement of community partners and collaborating with primary care network to deliver patient education, services awareness and bring about a more closely knitted and well-connected health district for the community.

We are passionate about being a community-centric hospital which provides a CareHub as an integrated solution with telehealth at its core to facilitate telemedicine consultation services between patients and healthcare providers at Alexandra Hospital, tele-collaboration between our community partners, primary care and our hospital, management of medical and social emergencies, matching of resources suited to the patient's care needs and tracking of health outcomes and healthcare utilisation at a systems level.

Clinical Director, Community Strategy

# Dr Jeanette Ting

Consultant



**Dr Jeanette Ting is the Clinical Director of Community Strategy at Alexandra Hospital, which looks at engaging the community and partners to deliver care as one to serve the health and social needs of the population.**

**Dr Ting graduated from the University of Manchester (UK) in 2008 and continued to pursue her passion in Cardiology by qualifying to be a Member of the Royal College of Physicians (Edinburgh) in 2013 and obtaining her Master of Medicine (Cardiology) in 2017. In addition to her administrative appointment at Alexandra Hospital, she sees a wide range of patients with cardiac conditions both at National University Heart Centre and Alexandra Hospital.**

#### Areas of Interest

- General Cardiology, Geriatric Cardiology

---

#### Academic Qualifications

- MB ChB (UK)
- MRCP (UK)
- Master Medicine
- Geriatric Cardiology



Email

[jeanette\\_hy\\_ting@nuhs.edu.sg](mailto:jeanette_hy_ting@nuhs.edu.sg)



# Innovation

**Alexandra Hospital will serve as a sandbox for test-bedding innovative solutions as it redesigns healthcare.**

**While Alexandra Hospital focuses on disruptive innovation, it will also facilitate sustainability and encourage incremental innovation, as well as encourage the adoption, assimilation, and exploitation of value-driven novelties. This not only encompasses technology, but also covers strategy, organisation, service, and processes across the inpatient, outpatient, community, and home settings.**

Clinical Director, Health Innovation & Technology / Deputy CMIO

# Dr Alexander Yip

Consultant



**Dr Alexander Yip is the Clinical Director, Health Innovation & Technology at Alexandra Hospital, which looks at how innovation and technology help transform care delivery in the hospital and community.**

**He also serves as a Deputy CMIO of Alexandra Hospital and Deputy Director for the Centre of Innovation in Healthcare, in the NUHS.**

#### Areas of Interest

- Gastroenterology and Hepatology
- Innovations, Technology and Transformations in Healthcare Delivery

---

#### Academic Qualifications

- University College Dublin (Dublin, Ireland)  
MB BCh BAO
- Northeastern University (Boston, MA, USA)  
Bachelor of Science in Neuroscience



[alexander\\_yip@nuhs.edu.sg](mailto:alexander_yip@nuhs.edu.sg)

# Doctors

The model of health and care at Alexandra Campus is defined by elements abbreviated as OOOOOH (One patient, One bed, One care team, One principal doctor, One with the community, Healthcare redesign).

Our Doctors are members of a multi-disciplinary team supporting the signature programmes as well as our surgical and specialist programmes. Consolidation of care is carried out, in which appointments are rationalized for patients from multiple separate disease-focused reviews with different family physicians and specialists across various hospitals and clinics to one principal doctor where possible.



**Prof James Hui** | Senior Consultant  
**A/Prof Jason Phua** | Senior Consultant  
**A/Prof Khoo See Meng** | Senior Consultant  
**A/Prof Mark Thong** | Senior Consultant  
**A/Prof Quek Swee Tian** | Senior Consultant  
**Dr Addy Tan** | Senior Consultant  
**Dr Amartya Mukhopadhyay** | Senior Consultant  
**Dr Asim Shabbir** | Senior Consultant  
**Dr Benjamin Leong** | Senior Consultant  
**Dr Chua Wei Jin** | Senior Consultant  
**Dr Dariusz Olszyna** | Senior Consultant  
**Dr Effie Chew** | Senior Consultant  
**Dr Julian Wong** | Senior Consultant  
**Dr Keith Ho Weng Hoe** | Senior Consultant  
**Dr Loh May-Han** | Senior Consultant  
**Dr Paul Zhao Songbo** | Senior Consultant  
**Dr Reddy Sanjeeva** | Senior Consultant  
**Dr Sachin Agrawal** | Senior Consultant  
**Dr Santhosh Kumar Seetharaman** | Senior Consultant  
**Dr Satya Pavan Kumar Gollamudi** | Senior Consultant  
**Dr Susan Logan** | Senior Consultant  
**Dr Teng Gim Gee** | Senior Consultant  
**Dr Usha Narasimhan** | Senior Consultant  
**Dr Wong Weng Hoa** | Senior Consultant  
**Dr Yong Woon Chai** | Senior Consultant  
**A/Prof Victor Koh** | Consultant  
**Dr Alexander Yip Wenjun** | Consultant  
**Dr Andre Tan Teck Huat** | Consultant  
**Dr Bernard Lau Puang Huh** | Consultant  
**Dr Chua Joo Wei** | Consultant  
**Dr Chua Wei Liang** | Consultant  
**Dr Desmond Teo** | Consultant  
**Dr Gavin Ng Yeow Peng** | Consultant  
**Dr Hong Wei Zhen** | Consultant  
**Dr Jeanette Ting Hsin Yeen** | Consultant

**Dr Jonathan Tan Jiong Hao** | Consultant  
**Dr Kathleen Sek Su-Yen** | Consultant  
**Dr Lee Chun Tsu** | Consultant  
**Dr Liew Mei Fong** | Consultant  
**Dr Loo Wai Mun** | Consultant  
**Dr Louisa Sun Jin** | Consultant  
**Dr Low Ying Liang** | Consultant  
**Dr Ng Yau Hong** | Consultant  
**Dr Ong Lizhen** | Consultant  
**Dr Poh Keng Soon** | Consultant  
**Dr Priyanka Khatri** | Consultant  
**Dr Serene Wong Xin Lin** | Consultant  
**Dr Siow Wen Ting** | Consultant  
**Dr Sujith Indeewara Wijerathne** | Consultant  
**Dr Tan Chi Hsien** | Consultant  
**Dr Tan Li Feng** | Consultant  
**Dr Winnie Teo Ziyun** | Consultant  
**Dr Xu Xinni** | Consultant  
**Dr Asrie Bin Arsad** | Associate Consultant  
**Dr Eunice Dawn Kwa** | Associate Consultant  
**Dr Fathima Ashna Nastar** | Associate Consultant  
**Dr Laureen Wang Yi-Ting** | Associate Consultant  
**Dr Lin Ziwei** | Associate Consultant  
**Dr Phang Kee Fong** | Associate Consultant  
**Dr Su Peijing** | Associate Consultant  
**Dr Tan Jse-Wei Ian** | Associate Consultant





# Nursing

The biggest uniformed group in Alexandra Hospital is also fondly known as the “Alex Nightingales” by our colleagues. Armed with a wide skill set from varied backgrounds such as Intensive Care, Emergency Medicine, and other Medical and Surgical sub-specialties, our nurses are well-equipped to play a pivotal role in both inpatient and outpatient care.

## Team Leads

**Apolonia Bunagan Binalay** | Nurse Manager II  
**Belale Leodelyn Abacan** | Nurse Manager I  
**Chin Kai Ling, Joanne** | Nurse Educator II  
**Constance Chua Hui Leng** | Nurse Manager I  
**Doreen Heng Gek Noi** | Assistant Director of Nursing  
**Joyce Er Biaw Theng** | Nurse Clinician I-Advanced Practice Nurse  
**Darren Goh Zhongwei** | Nurse Clinician I-Advanced Practice Nurse  
**Keren Heng Kea Ling** | Assistant Director of Nursing  
**Janet Lam Mei Peng** | Assistant Director of Nursing  
**Julianah Omar** | Nurse Manager I  
**Kalarani d/o Sankaran** | Senior Nurse Manager  
**Amanda Kok Yin Lai** | Nurse Manager I  
**Lai Sook Funn** | Nurse Educator I  
**Irene Lee Kah Yee** | Nurse Manager I  
**Lee Siew Hui** | Nurse Clinician I-Advanced Practice Nurse  
**Liu Huan** | Nurse Clinician I  
**Lui Pek Lian** | Nurse Clinician II  
**Margaret Lee Kwee Hiang** | Chief Nurse  
**Maryana Binte Mohamed** | Nurse Clinician II  
**Mylene Virtudazo Malinao** | Nurse Manager I  
**Norhasidah Binte Wahid** | Nurse Manager I  
**Ong Guat Kheng** | Senior Nurse Manager  
**Ong Hwee Sen** | Assistant Director of Nursing  
**Ooi Gaik Bee** | Senior Nurse Clinician  
**Pauline Chong Li Yen** | Senior Nurse Clinician  
**Peck Sin Yee** | Nurse Clinician I  
**Reysham Kaur D/O Gursharan Singh** | Nurse Clinician I  
**Rose Lousel Cani Dimaranan** | Nurse Manager I  
**Ruhana Binte Sudin** | Nurse Clinician I  
**Seah Soon Peng** | Senior Nurse Clinician  
**See Hwee Hwee** | Senior Nurse Manager  
**Tai Sook Ping** | Senior Nurse Manager  
**Tan Cheng Hong** | Assistant Director of Nursing  
**Tan Poh Hoon** | Senior Nurse Clinician  
**Marie Tsen** | Senior Nurse Clinician-Advanced Practice Nurse  
**Veronica Margaret Loh Peixia** | Nurse Clinician II  
**Yang Qiuping** | Senior Nurse Manager  
**Irene Yeo Kah Keow** | Senior Nurse Manager  
**Yong Siu Yin** | Assistant Director of Nursing-Senior Nurse Mentor  
**Wendy Yue** | Ag Assistant Director of Nursing-Advanced Practice Nurse



# Allied Health

**Our Allied Health team strives to deliver holistic care to our patients and work together with our community partners to promote health empowerment and disease prevention, and ensure that the emotional, psychological, social and care needs of patients and their caregivers are taken care of through various interventions and resources.**

## Team Leads

**Melvin Poon** | Head, Allied Health

**Subha Rajaiya** | Senior Manager, Care and Counseling

**Catherine Koh** | Senior Manager, Dietetics

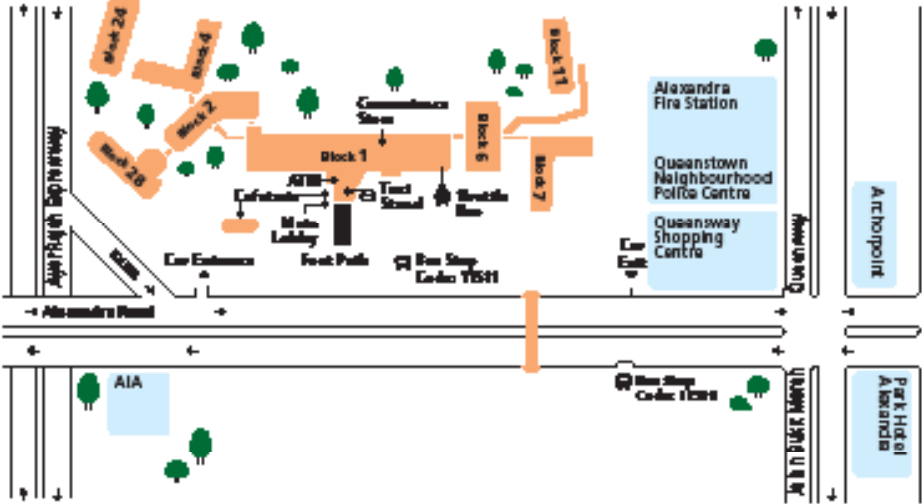
**Kelly Lim** | Senior Manager, Laboratory Medicine

**Casey Chong** | Senior Manager, Diagnostic Imaging

**Fung Xinhui** | Manager, Rehabilitation Services

**Sunitha Palani** | Manager, Clinical Measurement Centre

# How to Get to Alexandra Hospital



## By Public Bus

Alight at  
**Alexandra Hospital,**  
**Bus Stop Code: 11511**  
 Take buses 14, 33, 51, 61, 93,  
 100, 120, 195, 197

Alight opposite **Queensway**  
**Shopping Centre,**  
**Bus Stop Code: 11519**  
 Take buses 14, 33, 51, 61, 93,  
 100, 120 195, 197



## By MRT

From **Queenstown**  
**MRT Station,**  
**Exit A:** Take bus 51  
**Exit B:** Take bus 195

From  
**Commonwealth**  
**MRT Station,**  
**Exit B:** Take bus 100

From **Redhill MRT**  
**Station, Exit A:**  
 Take buses 33, 120





**By Shuttle Bus**

**From Queenstown  
MRT Station to  
Alexandra Hospital**

**Weekdays excluding  
Public Holidays:  
Queenstown**

**MRT Station, Exit B**

First bus: 6.40am

Last bus: 8.00pm

**Block 158 Mei Ling Street**

Bus Stop Code: 11579

**Block 153 Mei Ling Street**

Bus Stop Code: 11599

**Block 163 Mei Chin Road**

Bus Stop Code: 11609

**Alexandra Hospital  
Blk 28**

**Alexandra Hospital  
Main Lobby**

First bus: 6.40am

Last bus: 8.15pm

**Weekends &  
Public Holidays**

**Queenstown**

**MRT Station, Exit B**

First bus: 10.00am

Last bus: 7.40pm

**Alexandra Hospital  
Main Lobby**

First bus: 10.10am

Last bus: 7.50pm

**NUHS to  
Alexandra Hospital**

**Weekdays excluding  
Public Holidays:**

**NUHS Tower Block**

First bus: 10.00am

Last bus: 5.00pm

**National University  
Hospital (NUH) Medical  
Centre**

Outside Burger King

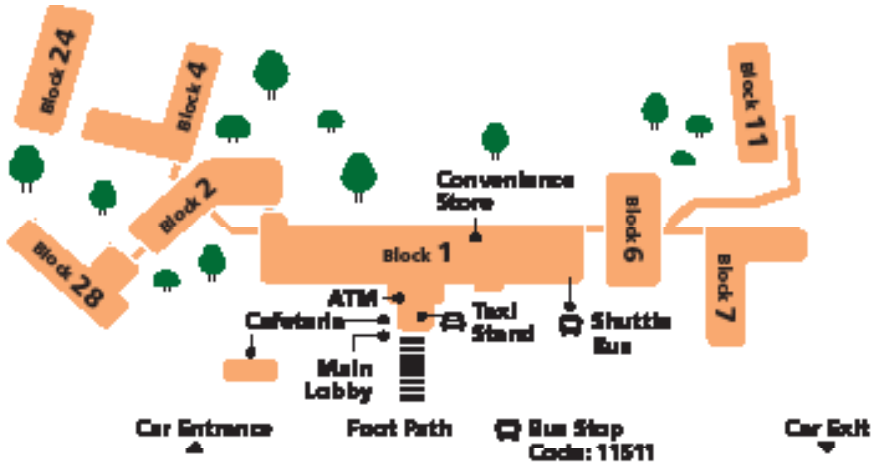
**National University  
Hospital (NUH)  
Main Building  
Lobby A**

**Alexandra Hospital  
Main Lobby**

First bus: 10.25am

Last bus: 5.30pm

# How to Get Around Alexandra Hospital



## Block 1

- Level 1**
  - Clinic F, Clinical Measurement Centre
  - Pharmacy
- Level 2**
  - Clinic J, Integrated Care Clinic
    - Gynaecology Clinic
    - Outpatient Infusion Centre (OPI)
    - Paediatric
  - Clinic K, Healthy Ageing Clinic
    - Dietetics
    - General Surgery Clinic
    - Palliative Clinic
    - Physiotherapy
    - Rehabilitation & Restorative Medicine Clinic
    - Staff Clinic
    - Urology Clinic
    - Vascular Clinic
- Level 3**
  - Ward 7

## Block 2

- Level 1**
  - Clinic D, Dental Centre
  - Clinic E
    - Anaesthesia Outpatient Consultation Clinic
    - Orthopaedic Centre
- Level 3**
  - Day Surgery Operating Theatre (DSOT)

## Block 4

- Level 1**
  - Ambulatory Surgery Centre
  - Endoscopy Centre
  - Rehabilitation 1
- Level 2**
  - Ward 2 and 3
- Level 3**
  - Ward 4 and 5

## Block 6

- Level 1**
  - Diagnostic Imaging 2 (DH 2)
  - 24-Hr Urgent Care Centre
- Level 2**
  - Diagnostic Imaging 3 (DH 3)
  - Major Operating Theatres 1 and 2 (MOT 1 & 2)
- Level 3**
  - Intensive Care Unit 1 (ICU 1)
  - Major Operating Theatres 3 and 4 (MOT 3 & 4)

## Block 7

- Level 1**
  - Ward 8 and 9
- Level 2**
  - Ward 10 and 11
- Level 3**
  - Ward 12 and 13

## Block 11

- Level 1**
  - Rehabilitation 2

## Block 28

- Level 1**
  - Care and Counselling
  - Clinic A, Ear, Nose and Throat Centre (ENT Centre)
- Level 2**
  - Clinic B, Eye Surgery Centre



**EMBRACE**

EMBRACE by Alexandra Hospital is community based one-stop geriatric services hub providing comprehensive care to eligible seniors aged 65 years and above.

**Are you 65 years old and above?  
Get a one-stop assessment by our  
Alexandra Hospital's EMBRACE  
team to help you age confidently,  
healthily and positively.**

**您今年幾歲或以上? 不如來試試由大坡醫院  
EMBRACE 提供的單一服務中心, 以圖為首、健康、  
积极地迎接乐享人生阶段。**

Adakah anda berusia 65 tahun ke atas? Dapatkan perkhidmatan penilaian kesihatan menyeluruh melalui program EMBRACE yang dianjurkan oleh Hospital Alexandra untuk membantu anda melalui hari penuaan anda dengan yakin dan selamat.

நீங்கள் 65 வயது அல்லது அந்த வயதிற்கு மேலானவரா? நீங்கள் தன்னம்பிக்கையோடு ஆரோக்கியமாகவும் நல்லபடியாகவும் ஈடுபடலாம். அமெக்காண்ட்ரா மருத்துவமனையின் EMBRACE நிலையத்தில் பரிசோதனை செய்துகொள்ளுங்கள்.

**WE OFFER**



**Memory screening**



**Falls/Fragility fracture risk/  
Functional assessment  
Fear of falls assessment**



**Nutrition screening**



**Caregiver support**



**Psychosocial assessment**



**Medications review**



**Discussions about wishes  
and preferences for your  
future care**

 [AH\\_GSH@nuhs.edu.sg](mailto:AH_GSH@nuhs.edu.sg)

 Please call our customer service line at 1800-CALL GSH (1800 225 5474). Available from 8.30am to 5.30pm, Monday to Friday (excluding public holidays).

 **Queenstown Polyclinic**  
580 Stirling Rd, Singapore 148958.

**Lions Befrienders Active Ageing Centre (AAC)**  
@Mei Ling Street  
Blk 150 Mei Ling Street #01-53, Singapore 141150.

**Lions Befrienders @Clementi**  
Blk 420A, Clementi Ave 1, #02-03, 5121420.



## vCare (TeleConsult@AH)

Keep your health in check in the comfort of your home!

### Unable To Attend Your Clinic Appointment?

Our vCare (TeleConsult@AH) service helps keep your health in check in between your busy schedule and in the comfort of your home.



Save time on traveling.



Make payment conveniently via one of our ePayment options available.



Receive medical certificates upon request.



Our healthcare professionals can treat and review common surgical and medical conditions without you having to travel to the clinic.



Have your medications delivered to your doorstep.



For more information, scan QR code

Speak to your doctor to make your vCare appointment today!  
Tel: 6472 2000  
Email: [AH\\_Enquiries@nuhs.edu.sg](mailto:AH_Enquiries@nuhs.edu.sg)

Teleconsultation is not suitable for emergency conditions and symptoms (eg: chest pain, breathing difficulties, recurrent vomiting, severe abdominal pain). If you require urgent medical attention, please call 995 or visit your nearest emergency department.

Minors (ie: patients aged below 16 years old) or those without agency (eg: dementia patient(s)) should be seen with their parent or guardian.

## Medication Delivery Service

# No More Queues at the Pharmacy, Save Time by Having Your Medication Delivered



## How to Order?

# You May Order via 4 Ways

### 1 In Person

Bring original prescription and completed Medication Delivery Form to the Central Pharmacy at Alexandra Hospital.

### 2 Via Email

Via Email - Email the completed Medication Delivery Form to [AH\\_homelivery@nuhs.edu.sg](mailto:AH_homelivery@nuhs.edu.sg).

### 3 Via Phone Call

Call +65 6379 3331 to place your order.

### 4 Via the OneNUHS App.

## Free Delivery



For more information on delivery fees, please go to <https://bit.ly/3emjpJg> or scan this QR code:



# 24-HR Urgent Care Centre



The hospital's 24-hour Urgent Care Centre provides immediate medical attention to patients with acute and urgent medical conditions.

Our multi-disciplinary team is well-trained to provide quality and personalised care, in the same ward, same bed and by the same primary care team.

Contact: +65 6472 2000

Location: Block 6, Level 1, 24-HR Urgent Care Centre

Operating Hours: 24 Hours

Email: [AH\\_Enquiries@nuhs.edu.sg](mailto:AH_Enquiries@nuhs.edu.sg)



# Services at a Glance

We cover a comprehensive suite of medical and surgical specialties, procedures and allied health services.

## Medical Specialties

- Advanced Internal Medicine
- Cardiology
- Dermatology
- Endocrinology
- Gastroenterology
- Geriatric Medicine
- Haematology
- Infectious Diseases
- Neurology
- Nephrology
- Palliative Care Medicine
- Psychological Medicine
- Rehabilitation Medicine
- Respiratory and Critical Care Medicine
- Rheumatology
- Sleep Medicine

## Surgical Specialties

- Anaesthesiology
- General Surgery
  - Breast surgery
  - Colorectal surgery
  - Endocrine surgery
  - Hepatobiliary and pancreatic surgery
  - Minimally invasive surgery
  - Upper gastrointestinal surgery
- Hand and Reconstruction Microsurgery
- Gynaecology
- Ophthalmology (Eye)
- Orthopaedic Surgery
- Otolaryngology (Ear, Nose and Throat)
- Urology
- Vascular surgery

## Other Specialties

- Diagnostic and Interventional Radiology
- Emergency Medicine
- Laboratory Medicine
- Pathology

## Other Services

- Care & Counselling
- Clinical Measurement Centre
- Dietetics
- Endoscopy
- Occupational Therapy
- Physiotherapy
- Podiatry
- Speech Therapy



#### **Main Line**

Call 6472 2000 to schedule an appointment or make enquiries.



#### **Email**

For Appointments: [AH\\_Appointment@nuhs.edu.sg](mailto:AH_Appointment@nuhs.edu.sg)

For Enquiries: [AH\\_Enquiries@nuhs.edu.sg](mailto:AH_Enquiries@nuhs.edu.sg)

For Feedback: [AH\\_Feedback@nuhs.edu.sg](mailto:AH_Feedback@nuhs.edu.sg)

Alexandra Hospital | 378 Alexandra Road, Singapore 159964.

Main Line: +65 6472 2000 | Fax: +65 6379 4339

[www.ah.com.sg](http://www.ah.com.sg) |   [AlexandraHospitalSG](#)