

One Care Team One-Stop Care



NUHS Mission

**To advance health
by synergising care,
education and research,
in partnership with patients
and the community.**

NUHS Vision

**A Healthy Community
Shaping Medicine
Transforming Care**

Alexandra Hospital Purpose Statement

**We redesign healthcare
with and for humanity.**

Alexandra Hospital is Open

The new Alexandra Hospital experience is designed to meet patients' needs at every step of your healthcare journey – from prevention to early intervention, consultation, admission, discharge, and post-discharge.

We care for our patients through our one care team, comprising of Nurses, Allied Health Professionals, Service Associates, Care Managers, Pharmacists, and supported by Specialists.

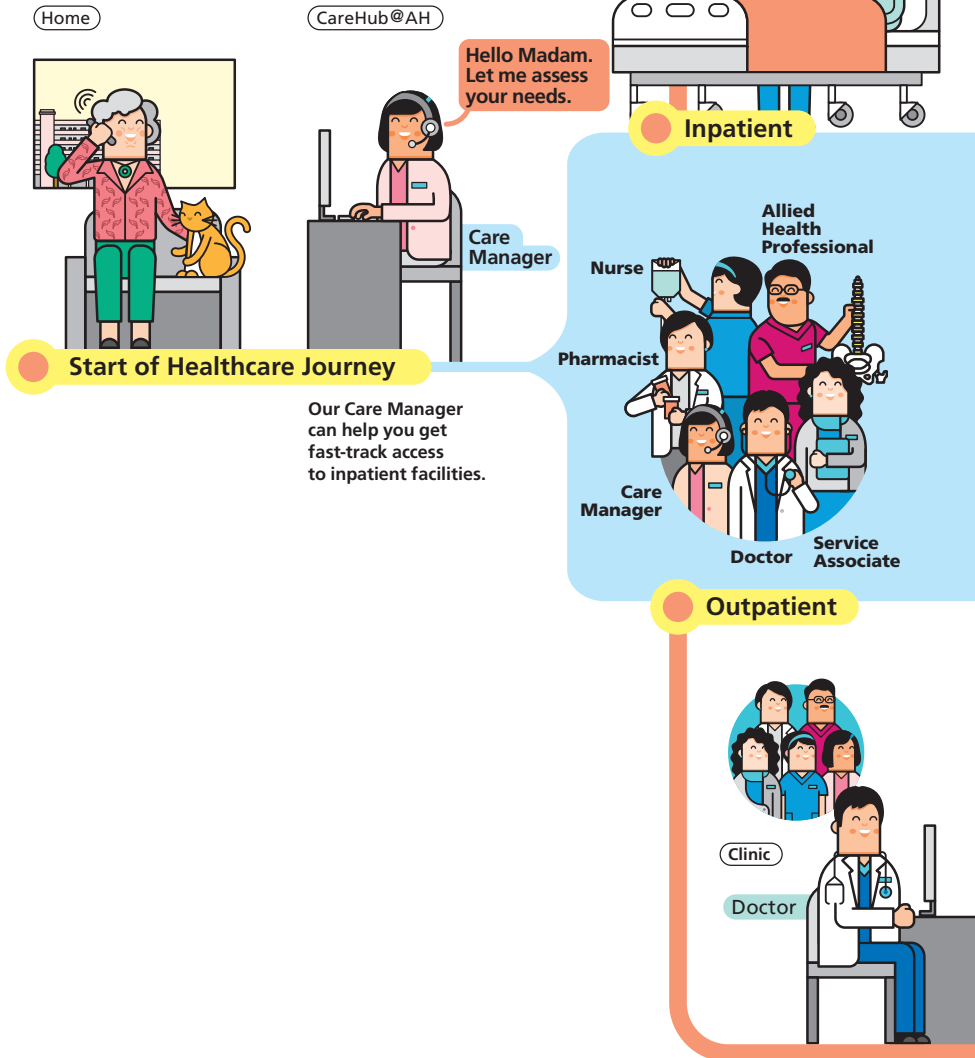
We are the first integrated hospital which provides a single continuum of care across different care settings from acute, sub-acute to rehabilitative care.

For our inpatients, we offer a same-bed, one-stop care across different stages of the recovery journey, thereby offering greater convenience, saving time and the hassle of inter-hospital transfers.

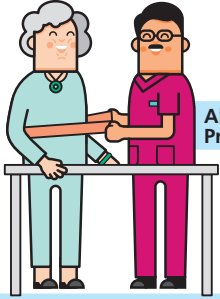
Our out-of-hospital care programme brings together community members from primary care to daycare and social services, helping patients to live better in the comfort of their homes and in the community.

One Continuous and Integrated Model of Care

At Alexandra Hospital, we see to your every need at every step of your healthcare journey – from prevention to early intervention, consultation, admission, treatment, rehabilitation, discharge and post-discharge care.



Acute and rehabilitation care are co-located under one roof, avoiding unnecessary transfer.



Allied Health Professional

CareHub @AH



Care Manager

One Care Team

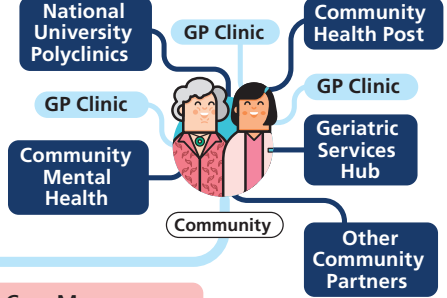
You will be managed by a multidisciplinary care team, led by the principal doctor.

Out-of-Hospital Care

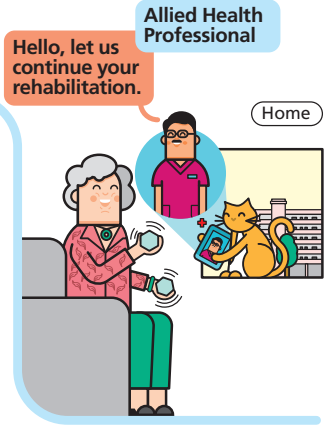
Your outpatient appointments will be consolidated, thus cutting down on multiple visits.



Community-Centric Care



Our Care Manager can help you navigate care by linking you up with resources in the community.



Our community health teams will check in on you, to help you live better in the comfort of your home and community.

One Touch Point, One-Stop Care

The new Alexandra Hospital experience will deliver holistic, continuum of care from the well, to acute care, long-term management of chronic conditions, geriatric care, to those who need end-of-life support, in five key programmes.

Five Programmes, One Redesigned Healthcare Journey:



Be Better
PREVENTIVE CARE

Take the first step towards health empowerment and prevention with our **Well Programme** by being proactive with screening, exercise and treatment.



Age Better
ELDER CARE

Clinic K (Healthy Ageing Clinic)
Our **Healthy Ageing Programme** cares for the elderly's mind, mobility and sensory, orthopaedic and other geriatric and social needs holistically.



Get Better
ACUTE CARE

24-Hour,
Walk-in Urgent Care Centre
The **FAST Programme** looks at emergency treatment from acute, sub-acute to rehabilitative care at our integrated wards.



Cope Better
SUPPORTIVE AND PALLIATIVE CARE

Champions for compassionate care and quality of life, at every age and at every stage, our **Supportive and Palliative Care Programme**:

- Enables and empowers everyone to care.
- Encourages caring across boundaries.
- Creates caring systems.
- Helps all to live well before leaving well.



Live Better
CHRONIC CARE

Clinic J
(Integrated Care Clinic)
The **Chronic Programme** led by one doctor and one care team consolidates a patient's multiple conditions and treatment plans including medication and rehabilitation regime, into one appointment.

Our Services and Facilities

We have a team of experienced and dedicated doctors and nurses who offer a comprehensive suite of medical services including surgical procedures and allied health services.

Medical Specialties

- Advanced Internal Medicine
- Cardiology
- Dermatology
- Endocrinology
- Gastroenterology
- Geriatric Medicine
- Haematology
- Infectious Diseases
- Neurology
- Nephrology
- Palliative Care Medicine
- Psychological Medicine
- Rehabilitation Medicine
- Respiratory and Critical Care Medicine
- Rheumatology
- Sleep Medicine

Other Specialties

- Diagnostic and Interventional Radiology
- Emergency Medicine
- Laboratory Medicine
- Pathology

Surgical Specialties

- Anaesthesiology
- General Surgery
 - Breast surgery
 - Colorectal surgery
 - Endocrine surgery
 - Hepatobiliary and pancreatic surgery
 - Minimally invasive surgery
 - Upper gastrointestinal surgery
- Hand and Reconstruction Microsurgery
- Gynaecology
- Ophthalmology (Eye)
- Orthopaedic Surgery
- Otolaryngology (Ear, Nose and Throat)
- Urology
- Vascular surgery

Other Services

- Care & Counselling
- Clinical Measurement Centre
- Dietetics
- Endoscopy
- Occupational Therapy
- Physiotherapy
- Podiatry
- Speech Therapy

The hospital is equipped with a broad range of medical facilities to support your healthcare needs.

Our Facilities

- 24-Hour Urgent Care Centre
- Ambulatory Surgery Centre
- Anaesthesia Outpatient Consultation Clinic
- Clinical Measurement Centre
- Core Laboratory
- Day Surgery Operating Theatres
- Diagnostic Imaging
- Ear, Nose and Throat Clinic
- Endoscopy Centre
- Eye Surgery Centre
- General Surgery Clinic
- Gynecological Clinic
- Healthy Ageing Clinic
- Integrated Care Clinic
- Integrated Wards
- Intensive Care Unit
- Major Operating Theatres
- Outpatient Infusion Centre
- Palliative Clinic
- Pharmacy
- Rehabilitation Centre
- Urology Clinic
- Vascular Clinic



Welcome to Alexandra Hospital

Quality Care

We've redesigned healthcare to provide a seamless and holistic journey under our one care team.



Advanced Technology

We provide comprehensive imaging and diagnostic radiology facilities and clinical laboratories.

Convenient Amenities and Facilities



Garden and Colonial Setting

The lush greenery and rustic colonial facade gives the hospital a unique charm amidst a tranquil and relaxing surrounding.



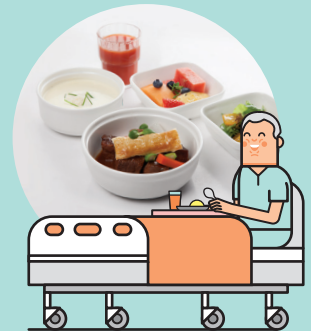
Wards

Our wards provide a conducive environment with good ventilation for patients to recuperate and spacious areas to foster interactivity.

Food and Dining

Our dieticians and doctors work closely with our chefs to create a specially planned menu for our patients. We also tailor special menus for those who are on therapeutic or textured diets.

At the hospital's main lobby, you'll find a 24-hour convenience store and a cafe for visitors to have a warm meal. There are food and drink vending machines too around the hospital to grab a quick bite.



ATMs and Payment Kiosks

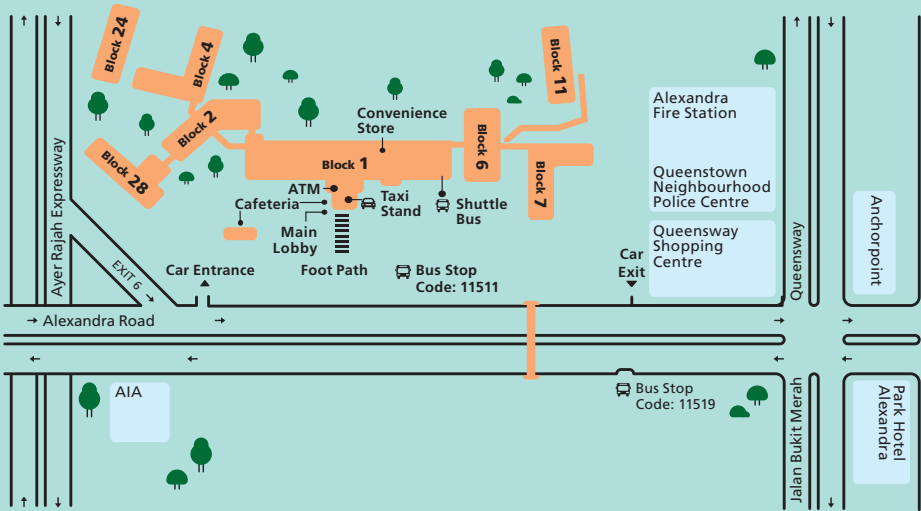
The hospital's main lobby has a POSB ATM, AXS kiosk, SAM kiosk and CashCard top-up machine.



Nearby Places

The surrounding area has various shopping and dining options, including Queensway Shopping Centre, Anchorpoint and Alexandra Village Food Centre.

How to Get to Alexandra Hospital



By Public Bus

Alight at

Alexandra Hospital,

Bus Stop Code: 11511

Take buses 14, 33, 51, 61, 93, 100, 120, 195, 197

Alight opposite Queensway Shopping Centre,

Bus Stop Code: 11519

Take buses 14, 33, 51, 61, 93, 100, 120 195, 197



By MRT

From Queenstown

MRT Station,

Exit A: Take bus 51

Exit B: Take bus 195

From

Commonwealth

MRT Station,

Exit B: Take bus 100

From Redhill MRT

Station, Exit A:

Take buses 33, 120



By Shuttle Bus
From Queenstown
MRT Station to
Alexandra Hospital

Weekdays excluding
Public Holidays:
Queenstown
MRT Station, Exit B
 First bus: 6.40am
 Last bus: 8.00pm

Block 158 Mei Ling Street
 Bus Stop Code: 11579

Block 153 Mei Ling Street
 Bus Stop Code: 11599

Block 163 Mei Chin Road
 Bus Stop Code: 11609

Alexandra Hospital
Main Lobby
 First bus: 6.40am
 Last bus: 8.15pm

Weekends &
Public Holidays
Queenstown
MRT Station, Exit B
 First bus: 10.00am
 Last bus: 7.40pm

Alexandra Hospital
Main Lobby
 First bus: 10.10am
 Last bus: 7.50pm

From Commonwealth
MRT Station to
Alexandra Hospital

Weekdays excluding
Public Holidays:
Commonwealth
MRT Station, Exit A
 First bus: 6.45am
 Last bus: 7.55pm

Blk 50
Commonwealth Drive
 Bus Stop Code: 11459

Blk 37B
Commonwealth Drive
 Bus Stop Code: 11449

Queenstown
Polyclinic
 Bus Stop Code: 11059

Alexandra Hospital
Main Lobby
 First bus: 6.45am
 Last bus: 8.10pm

Saturday, Sunday
and Public Holiday:
Commonwealth
MRT Station, Exit A
 First bus: 10.05am
 Last bus: 7.40pm

Alexandra Hospital
Main Lobby
 First bus: 10.20am
 Last bus: 7.55pm

NUHS to
Alexandra Hospital

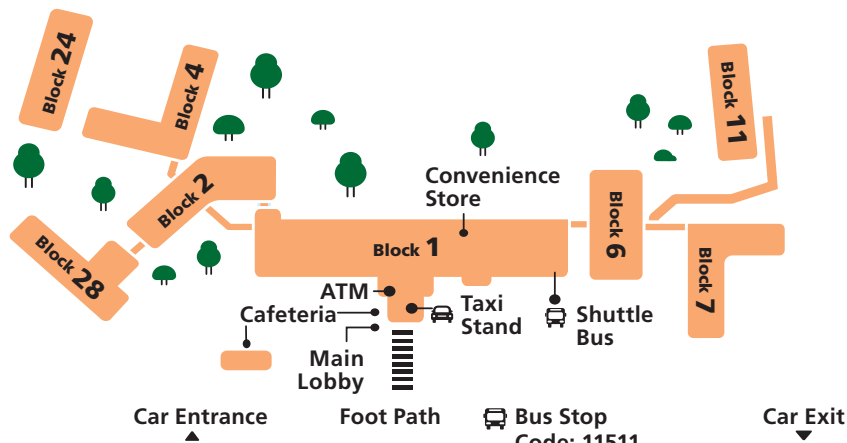
Weekdays excluding
Public Holidays:
NUHS Tower Block
 First bus: 10.00am
 Last bus: 5.00pm

National University
Hospital (NUH) Medical
Centre
 Outside Burger King

National University
Hospital (NUH)
Main Building
Lobby A

Alexandra Hospital
Main Lobby
 First bus: 10.25am
 Last bus: 5.30pm

How to Get Around Alexandra Hospital



Block 1

Level 1

- Clinic F, Clinical Measurement Centre
- Pharmacy

Level 2

- Clinic J, Integrated Care Clinic
 - Gynaecology Clinic
 - Outpatient Infusion Centre (OPIC)
 - Podiatry
- Clinic K, Healthy Ageing Clinic
 - Dietetics
 - General Surgery Clinic
 - Palliative Clinic
 - Physiotherapy
 - Rehabilitation & Restorative Medicine Clinic
 - Staff Clinic
 - Urology Clinic
 - Vascular Clinic

Level 3

- Ward 7

Block 2

Level 1

- Clinic D, Dental Centre
- Clinic E
 - Anaesthesia Outpatient Consultation Clinic
 - Orthopaedic Centre

Level 3

- Day Surgery Operating Theatre (DSOT)

Block 4

Level 1

- Ambulatory Surgery Centre
- Endoscopy Centre
- Rehabilitation 1

Level 2

- Wards 2 and 3

Level 3

- Wards 4 and 5

Block 6

Level 1

- Diagnostic Imaging 2 (DI 2)
- 24-HR Urgent Care Centre

Level 2

- Diagnostic Imaging 3 (DI 3)
- Major Operating Theatres 1 and 2 (MOT 1 & 2)

Level 3

- Intensive Care Unit 1 (ICU 1)
- Major Operating Theatres 3 and 4 (MOT 3 & 4)

Block 7

Level 1

- Wards 8 and 9

Level 2

- Wards 10 and 11

Level 3

- Wards 12 and 13

Block 11

Level 1

- Rehabilitation 2

Block 28

Level 1

- Care and Counselling
- Clinic A, Ear, Nose and Throat Centre (ENT Centre)

Level 2

- Clinic B, Eye Surgery Centre

Start Your Healthcare Journey With Us

Main Line
Call 6472 2000 to schedule an appointment or make enquiries.

Email
For Appointments: AH_Appointment@nuhs.edu.sg
For Enquiries: AH_Enquiries@nuhs.edu.sg
For Feedback: AH_Feedback@nuhs.edu.sg

Alexandra Hospital 378 Alexandra Road, Singapore 159964.
Main Line: +65 6472 2000 | Fax: +65 6379 4339
www.ah.com.sg [Facebook](https://www.facebook.com/AlexandraHospitalSG) [Instagram](https://www.instagram.com/AlexandraHospitalSG) [LinkedIn](https://www.linkedin.com/company/AlexandraHospitalSG)