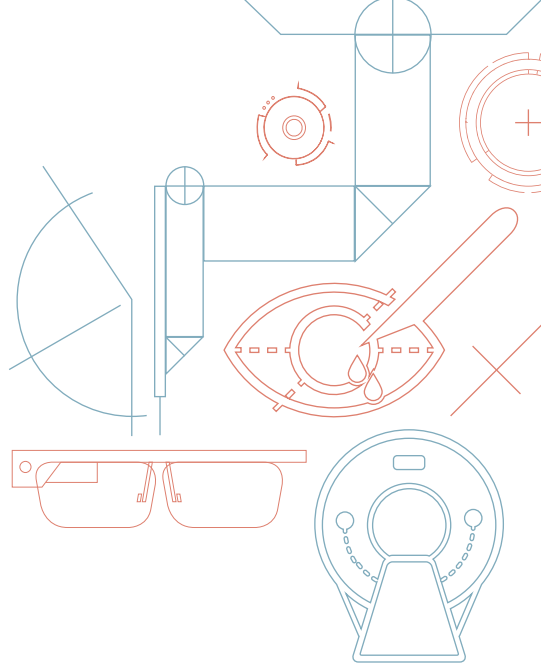




Alexandra  
Hospital



# specialist directory

One Care Team | Patient · Bed · Team · Principal Doctor · Community

**We redesign healthcare  
with and for humanity.**

## **NUHS Mission**

To advance health  
by synergising care,  
education and research,  
in partnership with patients  
and the community.

## **NUHS Vision**

A Healthy Community  
Shaping Medicine  
Transforming Care.

## **Alexandra Hospital Purpose Statement**

We redesign healthcare  
with and for humanity.



Scan the QR code to find directions and locate our facilities!

<https://for.sg/9ce2eu>

# Contents

<b>About Alexandra Hospital</b>	<b>05</b>
<b>Foreword</b>	<b>06</b>
By Prof Jason Phua	06
By Prof Khoo See Meng	08
<b>How to get to Alexandra Hospital</b>	<b>09</b>
<b>Essential Contact Details</b>	<b>11</b>
<b>About Patient Liaison Centre</b>	<b>12</b>
<b>Our Range of Services</b>	<b>13</b>
<b>Urgent Care Centre</b>	<b>15</b>
<b>Access to Care at Alexandra Hospital</b>	<b>16</b>
<b>About IGH and Core Programmes at AH</b>	<b>17</b>
<b>About Integrated Medicine</b>	<b>18</b>
<b>Well Programme</b>	<b>22</b>
<b>Our Future Campus</b>	<b>23</b>
<b>Specialist Directory</b>	<b>24</b>
<b>Medical Specialties</b>	<b>25</b>
Advanced Internal Medicine	25
Cardiology	26
Dermatology	26
Endocrinology	27
Gastroenterology	27
Geriatric Medicine	28
Haematology	28
Infectious Diseases	29
Neurology	29
Palliative Medicine	30

Psychological Medicine	30
Rehabilitation Medicine	30
Respiratory and Critical Care Medicine	31
Rheumatology	32
Occupational Medicine	32
Family Medicine	32

## **Surgical Specialties 33**

Anaesthesiology	33
General Surgery	34
Breast Surgery	34
Colorectal Surgery	35
Endocrine & Thyroid Surgery	35
Hepatobiliary & Pancreatic Surgery	36
Minimally Invasive Surgery	36
Neurosurgery	36
Plastic Surgery	37
Upper Gastrointestinal Surgery	37
Urology	37
Gynaecology	38
Hand & Reconstructive Microsurgery	38
Ophthalmology (Eye)	39
Orthopaedic Surgery	40
MMSU	41
Otolaryngology (Ear, Nose and Throat)	42
Vascular Surgery	43

## **Other Specialties 44**

Diagnostic Imaging	44
NUCOHS Dental Clinic @ AH	44
Laboratory Medicine	45
Urgent Care Centre	45

## **Services at a Glance 53**

# About Alexandra Hospital

Alexandra Hospital (AH) is a member of the National University Health System (NUHS), a leading academic health system and one of three public healthcare clusters in Singapore.

AH is the first integrated general hospital in Singapore to offer holistic care from acute, sub-acute to rehabilitative settings, and reduces the need for a patient to transfer to another healthcare institution. Under its team-led and programme-based clinical model, every patient is cared by a single doctor and the same care team within one of the core clinical programmes. Our wait times for first appointment is one of the shortest for public hospitals in Singapore. The wait time at our 24-hour Urgent Care Centre is also between 1 to 2 hours wait time only for medical emergencies.

As part of an integrated academic health system, AH is a dedicated site for staging innovative health and care as well as person-centric solutions to scope, share and scale best practices. Together with community partners and patients, AH aims to bring about seamless integrated care beyond the hospital and empower patients and caregivers to enable the continuity of care in the safety and comfort of the home and community.

For more information, please visit [www.ah.com.sg](http://www.ah.com.sg) | [www.nuhs.edu.sg](http://www.nuhs.edu.sg)

## Members of the NUHS:

- National University Hospital
- Ng Teng Fong General Hospital
- Alexandra Hospital
- Jurong Community Hospital
- National University Polyclinics
- National University Cancer Centre, Singapore
- National University Heart Centre, Singapore
- National University Centre for Oral Health, Singapore
- NUS Yong Loo Lin School of Medicine
- NUS Faculty of Dentistry
- NUS Saw Swee Hock School of Public Health





**A/Prof Jason Phua**  
Chief Executive Officer

## Dear Friends in Primary Care and the Community,

My foreword to the previous Specialist Directory was written in 2019 – what a turbulent few years it has been since. First, our personal and professional lives were turned upside down from the biggest pandemic of the last hundred years. Next, our culture and mindset, and our structures and processes had to adapt to the sweeping changes due to Healthier SG and Age Well SG. Through it all, you weathered the storms, you held the fort, and as a result our healthcare system continues to stay afloat. As a citizen of Singapore and as partner of yours, I am truly grateful.

Even though the National University Health System (NUHS) has been tasked by the Ministry of Health (MOH) to be the regional health manager for the west of our little red dot, you are in many ways the true experts of population health. The NUHS Care Plan has three goals: to keep our population healthy, to anchor care in the community, and to deliver appropriate care. While these aims sound simple superficially, we all know how difficult they are to achieve.

To have any chance of success, we need to humbly learn from you and to closely work with you. Community-specialist integration is key, and one intervention we are actively pursuing is accountable discharge, in which all patients sent back to or comanaged with primary care are given a discharge memo for their general practitioners (GPs).

At Alexandra Hospital (AH), we often say that we have one purpose: to redesign healthcare with and for humanity. We do this by working on game changers in three areas. First, care model – we continue to refine the integrated general hospital, in which one team manages a patient regardless of whether she needs acute or rehabilitative care and one principal doctor manages a patient regardless of his comorbidities. Second, technology – we continue to build our virtual hospital, enabled by smart wards, digital wearables, contactless monitors, artificial intelligence, and integrated platforms. Third, infrastructure – we continue to redevelop of our campus,



with ground breaking happening this year.

It is our hope that these strategic thrusts will make life better for our patients and staff – and for all of you, our partners. As detailed in this Specialist Directory, we have substantially expanded the size of our healthcare team and the spread of our clinical services, be they in preventive care, integrated medicine, surgery, healthy ageing and geriatric medicine, rehabilitative medicine, psychological medicine, or supportive and palliative care. We have also started a Virtual Care Centre which both patients and primary care providers can call for clinical advice, the aim being to improve access to appropriate care while reducing unnecessary admissions and referrals.

As I walk the corridors, wards, clinics, and operating theatres at AH, I picture all of you auscultating the chest of a young man in a GP clinic, or holding the hands of an elderly woman in a community space, or comforting the family of a dying patient in a HDB flat. And the thought warms my heart because it reminds me that despite the manmade divide between hospitals, primary care, and the community, a common aspiration binds us together: to help those in need. If ever you feel our hospital can do better to make this aspiration a reality, if ever you need any assistance of any sort, please just let us know. My email address is **[jason\\_phua@nuhs.edu.sg](mailto:jason_phua@nuhs.edu.sg)**.

Yours sincerely,

A handwritten signature in black ink, appearing to read 'Jason Phua', with a stylized flourish at the end.

**Associate Professor  
Jason Phua**



**A/Prof Khoo See Meng**  
Chairman Medical Board

## Dear Colleagues,

Alexandra Hospital is a hospital which has been imagined differently. Conventional hospital departments which are based on the training backgrounds of the doctors will not exist in Alexandra Hospital. In its place are programmes and services that are organised around the needs of the patients and created according to the types of patients that the hospital will care for.

This edition of our Alexandra Hospital's clinical directory presents you a broad picture of how we organise ourselves into five clinical programmes over a single continuum of care, from the well to those requiring end-of-life care. These five key programmes, will form the pillars of the hospital's clinical organisational structure, which will in turn be supported by the surgical, rehabilitative, and urgent care services. Together, they will deliver care through an innovative model where one care team takes charge of each patient and manages the multiple complex co-morbidities to ensure that the care experienced by our patients is seamless, complementary and coherent across care settings.

Our ambition is to draw on the comprehensive resources and expertise of NUHS, and embrace the necessary complexity of the "community of care" created by the tight collaboration between hospitals, primary care providers and community partners, to deliver care to our patients with the paradoxical simplicity of a single care team, one bed and a named care provider.

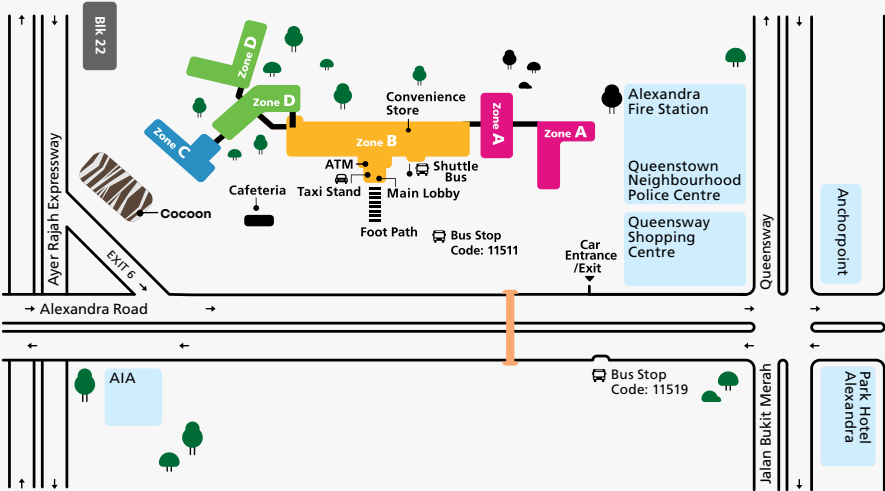
This is a hospital that sees its unique mission as generating thought-provoking hesitations in the routines of everyday care delivery rather than simply servicing those routines to deliver care because this to us, is healthcare redesigned.

Yours sincerely,

A handwritten signature in black ink, appearing to read 'Khoo See Meng'. The signature is fluid and cursive, with a horizontal line underneath the name.

**Associate Professor**  
**Khoo See Meng**

# How to Get to Alexandra Hospital



## By Public Bus

### Alight Alexandra Hospital Bus Stop (Code 11511)

Take buses: 14, 33, 51, 61, 93, 100, 120, 195, 197

### Alight Opposite Queensway Shopping Centre Bus Stop (Code 11519)

Take buses: 14, 33, 51, 61, 93, 100, 120, 195, 197



## By MRT

### From Queenstown MRT Station

Buses 51, 195

### From Commonwealth MRT Station

Bus 100

### From Redhill MRT Station

Buses 33, 120



## By Shuttle Bus

### From Queenstown MRT Station to Alexandra Hospital

Weekdays excluding  
Public Holidays

- **Queenstown MRT Station, Exit B**  
First bus: 6.40am  
Last bus: 8.30pm
- **Alexandra Hospital Main Lobby**  
First bus: 6.40am  
Last bus: 8.45pm

Saturday, Sunday  
and Public Holiday

- **Queenstown MRT Station, Exit B**  
First bus: 10.00am  
Last bus: 7.40pm
- **Alexandra Hospital Main Lobby**  
First bus: 10.10am  
Last bus: 7.50pm

### From National University Hospital to Alexandra Hospital

Weekdays excluding  
Public Holidays

- **NUHS Tower Block**  
First bus: 10.00am  
Last bus: 5.00pm
- **National University Hospital (NUH), Medical Centre, Outside Burger King**
- **National University Hospital (NUH) Main Building, Lobby A**
- **Alexandra Hospital Pavement (Turn right after exiting main lobby)**  
First bus: 10.25am  
Last bus: 5.30pm



## AH Internal Bus Shuttle

From AH Main Lobby to Cocoon to Blk 20 (Loop):  
Every 10 Mins

Weekdays excluding  
Public Holidays

- **Main Lobby**
- **Cocoon**
- **Blk 20**

# Essential Contact Details at AH:

Main Line: 6908 2222

Email: [contactus@nuhs.edu.sg](mailto:contactus@nuhs.edu.sg)

Visit [www.ah.com.sg](http://www.ah.com.sg)

Go to NUHS App for appointments

## **Patient Experience contact details:**

Main Line: 6694 0070 (**office hours from 8.30 am to 6.00 pm on Weekdays only**)

Email: [AH\\_Feedback@nuhs.edu.sg](mailto:AH_Feedback@nuhs.edu.sg)

## **AH Patient Liaison Centre:**

Email: [AH\\_Willseeyou@nuhs.edu.sg](mailto:AH_Willseeyou@nuhs.edu.sg)

## **Billing Enquiries:**

Email: [payment@lfs.com.sg](mailto:payment@lfs.com.sg)

## **Medical Records Office:**

Main Line: 6379 3380 (during office hours)

Email: [AH\\_Medical\\_Records@nuhs.edu.sg](mailto:AH_Medical_Records@nuhs.edu.sg)

Submit through NUHS app and click on "Medical Report" request tab

## **Integrated Pharmacy:**

Main Line: 6379 3322

Email: [ah\\_pharmacyenquiries@nuhs.edu.sg](mailto:ah_pharmacyenquiries@nuhs.edu.sg)

## About Patient Liaison Centre

The AH Patient Liaison Centre is a one-stop Centre to help persons with specific non-medical needs. Email [AH\\_willseeyou@nuhs.edu.sg](mailto:AH_willseeyou@nuhs.edu.sg).

## Frequently Asked Questions

- **What are the operating hours for Alexandra Hospital Specialist Outpatient Clinic?**

- The operating hours for specialist Outpatient clinic are from Monday -Friday, 8.30am - 5.30pm.
- The clinics are closed on weekends and public holidays.
- If you need medical care after office hours, please visit our Urgent Care Centre, which runs 24 hours and is located at level 1 of Alexandra Hospital.

- **Is the 24hr Accident and Emergency Department available in Alexandra Hospital?**

- We have an Urgent Care Centre which is available 24/7 and tends to many medical emergencies.

- **What is Urgent Care Centre?**

- The Urgent Care Centre operates 24 hours a day, 7 days a week, and is accessible via private ambulance service and walk-ins.





# Our Range of Services

We provide a wide range of outpatient medical care at our various outpatient clinics and a full suite of specialist surgical services which support our five clinical programmes. Our experienced specialist doctors at our Centres and Clinics are focused on delivering quality care to patients through collaboration and comprehensive evaluation, diagnosis and management of conditions and diseases



**Ear, Nose And Throat  
Centre (ENT Centre)**



**Endoscopy  
Centre**



**Eye Surgery  
Centre**



**General Surgery  
Clinic**



**Gynaecology  
Clinic**



**Hand and  
Reconstructive  
Microsurgery Clinic**



**Neurosurgery  
Clinic**



**NUCOHS  
Dental Clinic  
@ AH**



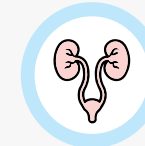
**Orthopaedic  
Centre**



**Plastic,  
Reconstructive &  
Aesthetic Surgery  
Clinic**



**Thoracic Surgery  
Clinic**



**Urology Clinic**



**Vascular Clinic**



**24-HR Urgent  
Care Centre**



# Urgent Care Centre



The hospital's 24-hour Urgent Care Centre provides immediate medical attention to patients with acute and urgent medical conditions.

Our multi-disciplinary team is well-trained to provide quality and personalised care, in the same ward, same bed and by the same primary care team.

**Contact:** +65 6908 2222

**Location:** Zone A, A01-05, Urgent Care Centre

**Operating Hours:** 24 Hours

**Email:** [AH\\_Enquiries@nuhs.edu.sg](mailto:AH_Enquiries@nuhs.edu.sg)



# Access to Care at Alexandra Hospital

## Patients can be referred to Alexandra Hospital in the following ways:

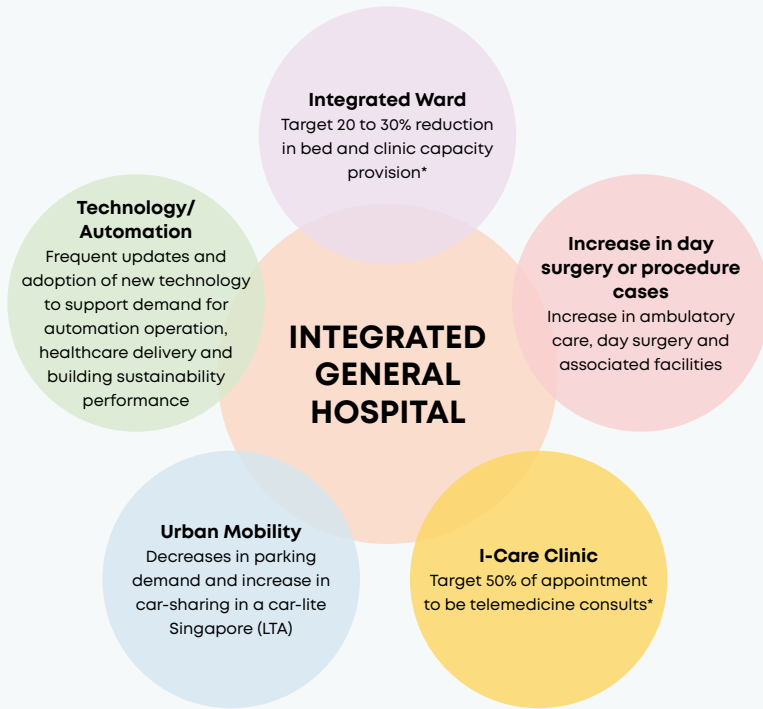
- Self-referral or walk-in through our Urgent Care Centre.
- Via NUHS app with referral letter from a General Practitioner (GP), or Polyclinic. To include any specification or patient's request (e.g. doctor by name, gender, rank, etc)
- Direct re-admission through our **Virtual Care Centre hotline 8181 3288** for our existing patients, caregivers, and community partners.

## Patients to bring along:

- NRIC or passport (for foreigners).
- Medical Benefits Identification Documents (e.g. Civil Service Card, Medical Benefit Identification Memo or Blood Donor Card).
- Valid work permit for employment pass and letter from their employer if they are a foreigner working in Singapore.
- Appointment card (for second and subsequent visits).
- CHAS referral form
- GP/polyclinic referral letter

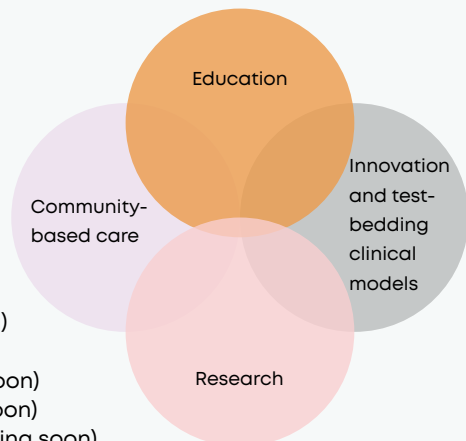


# About IGH



# Core Programmes at AH

1. Well Programme
2. Integrated Medicine
3. Geriatric Medicine (Healthy Ageing)
4. Supportive & Palliative Care
5. Rehabilitation Medicine (coming soon)
6. Psychological Medicine (coming soon)
7. Ambulatory Surgical Services (coming soon)



# About Integrated Medicine

## Integrated General Hospital

AH is one of the first Integrated General Hospitals (IGH) in Singapore. The IGH model is designed to provide patients with a coordinated and holistic care experience.

The IGH model is based on the following principles:

- **Patient-centred care:** The IGH model puts the patient at the centre of care. Patients are assigned a single care team that is responsible for their care throughout their stay at the hospital. This team includes doctors, nurses, pharmacists, therapists, dietitians, social workers, and other healthcare professionals.
- **Integrated care:** The IGH model integrates care across different settings, including the hospital, community, and home. This ensures that patients receive the right care at the right time, in the right setting.
- **Holistic care:** The IGH model considers the physical, mental, and social needs of patients. This ensures that patients receive the full range of care they need to improve their health and well-being.

There are 5 programs in AH IGH:

1. Well Program
2. Integrated Medicine
3. Healthy Ageing Program
4. Rehabilitation Medicine Program
5. Supportive and Palliative care Program

## Integrated Medicine

The Integrated Medicine program is the largest program in Alexandra Hospital (AH) and is organised around the core of Internal Medicine. We believe in the IGH model of care and deliver patient-centred, integrated and holistic care through our One Care Team in our inpatient and outpatient services. The program is helmed by the twelve specialties of Internal Medicine. These include:

- Advanced Internal Medicine
- Cardiology
- Dermatology
- Endocrinology
- Gastroenterology & Hepatology
- Haematology
- Infectious Diseases
- Neurology
- Psychological Medicine
- Renal Medicine
- Respiratory Medicine
- Rheumatology

The specialty-specific services can be found in their individual webpages.



## Inpatient Wards under Integrated Medicine Programmes

Inpatient wards cater to patients who are acutely unwell with urgent care needs and require inpatient admission including critical care and dialysis. The inpatient care team facilitates a seamless transition of care for patients, as they progress from acute inpatient care to subacute care and ultimately rehabilitative care. Throughout their journey in the hospital, they are managed by one dedicated care team, ensuring continuity and consistent support.

Inpatient care under this program is specially planned such that various levels of care intensity for a patient are integrated with minimal transfers between facilities and care teams. Wherever possible, patients' bed and ward remain the same during their stay at the hospital, while the level of care intensity may vary, depending on the progress of their medical condition. In this way, we ensure a more efficient care process that streamlines their journey to wellness.

Each patient is under the care of a multidisciplinary team, comprising a doctor, nurse, therapist, pharmacist, care coordinator and medical social worker where necessary. The team provides holistic care to the patient, tailored to his/her unique biomedical and psychosocial needs. The same team will manage a seamless transition from acute care to rehabilitative services as well. Through our comprehensive approach, we ensure that the patient's recovery is smooth and hassle free.

## Integrated Care Clinic (ICare Clinic)

The ICare Clinic provides the specialist outpatient services under Integrated Medicine program. It focuses on specialised outpatient care for patients with complex diseases and multiple chronic medical conditions. We aim to provide accessible, cost effective and integrated diagnostic and treatment plans to help patients manage chronic medical diseases, delay disease progression and improve patient outcomes. We also strongly believe in empowering our patients and actively engaging patients in self-management.

The ICare Clinic is a comprehensive suite of specialist outpatient clinics where the twelve specialties operate to serve the ambulatory patients. Depending on specialty, the location of clinics may be in Clinic J/K or Cocoon building.

- **Advanced Internal Medicine**
- **Cardiology**
- **Dermatology**
- **Endocrinology**
- **Gastroenterology & Hepatology**
- **Haematology**
- **Infectious Diseases**
- **Neurology**
- **Psychological Medicine**
- **Renal Medicine**
- **Respiratory Medicine**
- **Rheumatology**

An ICare Clinic centres care around the patient. A patient, who would otherwise see multiple doctors across different care settings for multiple conditions, is managed holistically by One Principal Doctor, who co-ordinates and delivers patient care by the One Care team of other specialists, nurses and allied health providers.

The model is envisioned to tackle the nation's rapidly aging population with growing chronic diseases burden and care fragmentation. To enable the model, we embrace the generalist-led, specialist-supported approach where every doctor practises on top of their licence as a specialist, and is concurrently well-versed with the management of the breadth of general medicine conditions.

Following the principles of IGH model, the 3 key features of the ICare Clinic are:

- One Principal Doctor, One Care Team;
- Consolidation of care to reduce multiple specialist visits and polypharmacy;
- Right-siting of care to primary care

We receive referrals from the polyclinics, general and specialist practitioners as well as internally from AH inpatient services, surgical services and Urgent Care Centre. Under NUHS, our programme has built strong links with our primary care in National University Polyclinics (NUP), Primary Care Network (PCN), Regional Health System Primary Care Network / Family Physician) as well as the community care teams to provide seamless and accessible care in the western cluster.

## Key Services provided by Integrated Medicine Programmes

- Virtual Care Centre- a medical helpline staffed by our Care Team, who will be able to advise and link you up with healthcare services based on your care needs after discharge.

- Transitional Care Programme- a program that helps transit patients safely from AH to home by providing out-of-hospital supportive care.
- NUHS@Home- a new model of care delivery that provides acute care for patients in their homes as an alternative option to hospital admission.
- Medical specialist consultations for non-specific symptoms to complex medical conditions. A wide range of diagnostics (laboratory, imaging, specialised assessments, endoscopies etc.) that may be performed in AH or NUH.
- Comprehensive disease management with lifestyle advice, medications and other interventions. Detailed descriptions of the various specialties' services can be found in the specialty websites.
- Patient education by nurses on various chronic diseases.
- Nurse-led clinics by specialised nurses e.g. gout virtual monitoring clinic, chronic kidney disease management.
- Pharmacy-led services including anti-coagulation clinics, diabetes management and telemonitoring, medication reviews, osteoporosis management and smoking cessation counselling.
- Metabolic Care Programme under ICare Clinic focuses on management of weight related conditions and weight loss to support a healthy lifestyle in patients with the metabolic syndrome.
- Virtual consultation services (vCare) for suitable patients.
- Telemonitoring services e.g. for hypertension, diabetes.
- Perioperative Management.
- Outpatient injection and infusion services e.g. intravenous iron, bisphosphonates, steroids.
- Age-appropriate preventive care.
- Right-siting and handover of care for patients with stable medical conditions: our care manager associates streamline the transition of care from ICare clinic to named primary care doctors seamlessly by scheduling appointments that are convenient and affordable.

## Resources

- A suite of medical specialties supports the IGH Programme at AH. For the full list of services, click here:  
<https://www.ah.com.sg/Pages/Our%20Programmes/Specialities.aspx>
- For more information on our Allied Health Services and rehabilitation services, click here:  
<https://www.ah.com.sg/Pages/For%20Patients/Rehabilitation.aspx>
- ICare Clinic Brochure:  
<https://www.ah.com.sg/Publications/Live%20Better%20Brochure.pdf>
- VCC (Virtual Care Centre) – for more information, click here:  
[https://www.ah.com.sg/Publications/VCC-Brochure-Eng-\(Oct2022\).pdf](https://www.ah.com.sg/Publications/VCC-Brochure-Eng-(Oct2022).pdf)

# Well Programme

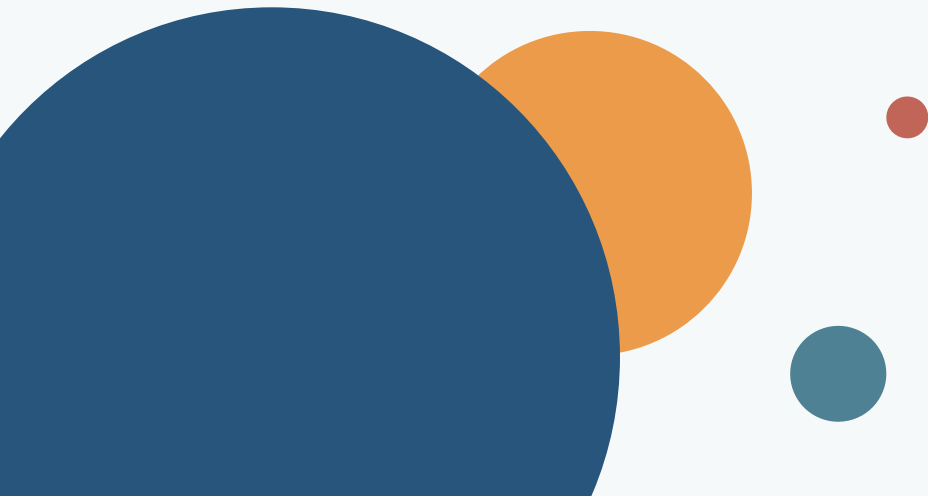
## Take Your First Step Towards Health Empowerment With Us

Whether it is to prevent diseases, maintain or improve your health state and wellbeing, Alexandra Hospital's Well Programme can help you.

### Our Offerings:

- Tailored, sustainable, evidence-based preventive care.
- Integrated Care approach with one-stop multi-disciplinary team, including health coaching and virtual health support to help you achieve your health goals.
- Easy access to health services with appointments in one place and direct access to our other flagship programmes, facilities and services.

Email [AH\\_Wellness@nuhs.edu.sg](mailto:AH_Wellness@nuhs.edu.sg) for enquiries or booking of appointments





# Our Future Campus



Alexandra Hospital will be transformed and redeveloped into a bigger campus by 2030, with more facilities and greater accessibility for all, integrating community and green spaces linked to the rail corridor. It is Singapore's first Integrated General Hospital with a full suite of holistic and seamless care from acute, sub-acute to rehabilitative settings, reducing the need for a patient to transfer to another healthcare institution.

The new AH is the first public hospital redeveloped after the Covid-19 pandemic. It responds to growing needs of an ageing Singapore and is pandemic and future-proof for the health and care needs of tomorrow. It is a well-integrated, well-zoned, green and sustainable campus with zero carbon and the most energy efficient, smart hospital and campus with its peaks in medical excellence. It also leads in phygital care, new roles of nurses and caregivers, a care model which is resource-efficient (including manpower savings).

AH is now the site for staging innovative health and care as well as person-centric solutions with a view to enabling best practices to be scoped, shared and scaled with the help of technological advancements. Together with the community, AH strives to bring about seamless integrated care beyond discharge, and enabling continuity of care anchored in the safety and comfort of the home and community.

By 2030, the new campus will be fully integrated with the larger Queenstown community, providing greater accessibility for patients and their families. It will be an Integrated General Hospital with a full suite of hospital services, and six peaks of excellence in Integrated Care, Geriatric Medicine, Supportive and Palliative Care Medicine, Rehabilitative Medicine, Psychological Medicine, Ambulatory Surgery. The new Alexandra Campus, will have more beds and facilities to care for a larger and growing population in Queenstown and beyond. AH will also play a key role in the Health District@Queenstown and Healthier Sg. AH will also strengthen the link with the community, bridge the divide between health and social care and enable easier access to care, with strong focus on general medicine, geriatric medicine, palliative care, rehabilitation medicine, psychiatry and generalist surgery.



Alexandra Hospital and the Rail Corridor will be well-integrated in design and will promote active living and biodiversity. In the approved URA Masterplan, there will be seamless connectivity across AH and its surrounding communities, and AH will be a healthcare campus designed with and for the community - age-friendly community and green spaces will be strategically linked to the Rail Corridor. This will include cycling or walkthrough paths with heritage trail and memory markers of the hospital's rich history.



# **SPECIALIST** DIRECTORY

---

# Medical Specialties



**Dr Satya Gollamudi**

Head and Senior Consultant, Department of Medicine  
Division: Advanced Internal Medicine

## Advanced Internal Medicine



**Dr Desmond Teo  
Boon Seng**  
Senior Consultant



**Dr Hazel Teng Leng**  
Associate Consultant



**Dr Asrie Bin Arsad**  
Consultant



**Dr Martin Soo Min Yi**  
Associate Consultant



**Dr Jonathan Edward  
Jacob**  
Consultant



**Dr Rachel Choe**  
Associate Consultant



**Dr Shoban Krishna  
Kumar**  
Associate Consultant



**Dr Wang Zhemín**  
Associate Consultant

## Cardiology



**Dr Jeanette Ting  
Hsin Yeen**  
Head and Consultant



**Dr Alfred Yip**  
Associate Consultant



**Dr Wang Yi Ting  
Laureen**  
Consultant

## Dermatology



**Dr Lester Juay**  
Consultant



**Dr Mok Zhun Rui**  
Consultant



**Dr Liao Mei Qi, May**  
Consultant

## Endocrinology



**Dr Andre Tan**  
Head and Consultant



**Dr Kathleen Sek**  
Consultant



**Dr Fathima Ashna  
Nastar**  
Consultant



**Dr Nicole Chong**  
Associate Consultant

## Gastroenterology



**Dr Alexander Yip**  
Head and Consultant



**Dr Teng Li Peng  
Margaret**  
Consultant



**Dr Alex Soh**  
Consultant



**Dr Mok Shao Rong  
John**  
Consultant



**Dr Kristie Fan Huirong**  
Consultant



**Dr Tan Si Ying**  
Associate Consultant

## Geriatric Medicine



**Dr Santhosh Kumar Seetharaman**  
Head and Senior Consultant



**Dr Tan Li Feng**  
Consultant



**Dr Goh Kar Cheng**  
Consultant



**Dr Arthi Premkumar**  
Associate Consultant



**Dr Preetha Menon Venugopalan**  
Consultant



**Dr Hong Liyue**  
Associate Consultant



**Dr Rana Aroos**  
Consultant

## Haematology



**Dr Winnie Teo**  
Head and Consultant



**Dr Lee Chun Tsu**  
Consultant

## Infectious Diseases



**Dr Louisa Sun Jin**  
Head and Consultant



**Dr Tham Sai Meng**  
Associate Consultant

## Neurology



**Dr Tan Chi Hsien**  
Consultant



**Dr Goh Yi Hui**  
Associate Consultant



**Dr Amanda Chin  
Xin Yi**  
Associate Consultant



**Dr Jennifer Hung  
Hay Min**  
Associate Consultant

## Nephrology



**Dr Priyanka Khatri**  
Head and Consultant



**Dr Hong Wei Zhen**  
Consultant



**Dr Leanne Leong  
Ca Yin**  
Consultant

## Palliative Medicine



**Dr Yong Woon Chai**  
Head and Senior  
Consultant



**Dr Lim Ying Yin**  
Associate Consultant



**Dr Chen Yanjun**  
Consultant

## Psychological Medicine



**Dr Soo Shuenn Chiang**  
Head and Senior  
Consultant



**Dr Ganesh Kudva  
Kundadak**  
Consultant



**Dr Cheryl Chang**  
Consultant

## Rehabilitation Medicine



**Dr Effie Chew**  
Head and Senior  
Consultant



**Dr Lim Jeong Hoon**  
Senior Consultant





**Dr Alvin Tam Pui Kit**  
Consultant



**Dr Su Peijing**  
Consultant



**Dr Gobinathan S/O  
Chandran**  
Consultant



**Dr Yen Jia Min**  
Associate Consultant

## Respiratory and Critical Care Medicine



**Dr Liew Mei Fong**  
Head and Senior  
Consultant



**Dr Amartya  
Mukhopadhyay**  
Senior Consultant



**A/Prof Jason Phua**  
Senior Consultant



**Dr Siow Wen Ting**  
Senior Consultant



**A/Prof Khoo See Meng**  
Senior Consultant



**Dr Chua Joo Wei**  
Consultant



**Dr Serene Wong  
Xin Lin**  
Consultant



**Dr Genevieve Tan  
Mei Yun**  
Associate Consultant



**Dr Clare Anne Fong  
Yoke Kum**  
Associate Consultant

## Rheumatology



**Dr Teng Gim Gee**  
Head and Senior  
Consultant



**Dr Phang Kee Fong**  
Consultant

## Occupational Medicine



**Dr Alicia Loi Siew Ting**  
Consultant

## Family Medicine



**Dr Chiang Shu Hui  
Grace**  
Consultant

# Surgical Specialties



**Dr Wong Weng Hoa**  
Head and Senior Consultant,  
Surgical & Operating Theatre Services

## Anaesthesiology



**Dr Addy Tan**  
Head and Senior  
Consultant



**Dr Reddy Mummadi  
Sanjeeva**  
Senior Consultant



**Dr Wong Weng Hoa**  
Senior Consultant



**Dr Yanni Tan**  
Senior Consultant



**Dr Ong Say Yang**  
Senior Consultant



**Dr Lydia Liew**  
Consultant



**Dr Eunice Lee**  
Associate Consultant



**Dr Zheng Ning Koh**  
Associate Consultant



**Dr Peng Kailing**  
Associate Consultant

## General Surgery



**Dr Sujith Wijerathne**  
Head and Consultant  
Clinical discipline: Hernia Surgery and Minimally Invasive  
Surgery, Endocrine and Thyroid Surgery

## Breast Surgery



**A/Prof Mikael  
Hartman**  
Senior Consultant



**Asst Prof Celene Ng  
Wei Qi**  
Consultant

## Colorectal Surgery



**Dr Cheong Wai Kit**  
Senior Consultant



**Dr Norman Lin**  
Consultant



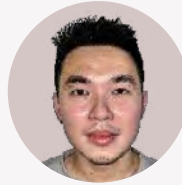
**Adj Asst Prof Ian Tan**  
Consultant



**Dr Bryan Buan**  
Associate Consultant



**Dr Dedrick Chan**  
Consultant



**Dr Jarrod Tan**  
Associate Consultant



**Dr Ng Jing Yu**  
Consultant



**Dr Lee Kai Yin**  
Associate Consultant

## Endocrine & Thyroid Surgery



**Asst Prof Rajeev  
Parameswaran**  
Senior Consultant



**Dr James Lee Wai Kit**  
Consultant

## Hepatobiliary and Pancreatic Surgery



**A/Prof Shridhar Iyer**  
Senior Consultant



**Dr Nigel Tan Chun Han**  
Consultant

## Hernia & Minimally Invasive Surgery



**Professor Davide Lomanto**  
Senior Consultant



**Dr Lynette Loo Mee Ann**  
Senior Consultant

## Neurosurgery



**Asst Prof Vincent Nga**  
Head and Senior Consultant



**Dr Arjun Bolem**  
Associate Consultant



**Clinical A/Prof Yeo Tseng Tsai**  
Senior Consultant



**Dr Nivedh Dinesh**  
Associate Consultant

## Plastic Surgery



**Dr Janet Hung  
Ngai Man**  
Head and Associate  
Consultant

## Upper Gastrointestinal Surgery



**A/Prof Asim Shabbir**  
Senior Consultant



**Adj Asst Prof Teh  
Jun Liang**  
Consultant



**Asst Prof Kim Guowei**  
Senior Consultant



**Dr Daryl Chia  
Kai Ann**  
Associate Consultant

## Urology



**Dr Chua Wei Jin**  
Head and Senior  
Consultant



**Dr Kelven Chen**  
Consultant



**Dr Melissa Tay**  
Consultant



**Dr Chia Jun Yang**  
Associate Consultant



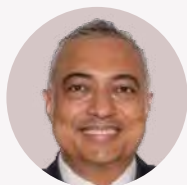
**Dr Arshvin Kesavan**  
Associate Consultant

## Gynaecology



**Dr Nau'shil Kaur  
Randhawa**  
Consultant

## Hand & Reconstructive Microsurgery



**Dr Sandeep Jacob  
Sebastin Muttath**  
Head and Senior  
Consultant



**Dr Ruth Tan**  
Associate Consultant



**Dr Ellen Lee**  
Consultant



## Ophthalmology (Eye)



**Adj A/Prof Loon Seng Chee**  
Head and Senior Consultant



**Dr George Thomas**  
Consultant



**Dr Chan Hwei Wuen**  
Senior Consultant



**Dr Hazel Anne Lin**  
Consultant



**Dr Vivien Lim**  
Senior Consultant



**Dr Katherine Lun**  
Consultant



**Dr Blanche Lim**  
Consultant



**Dr Lai Yien**  
Consultant



**Dr David Chen Ziyou**  
Consultant



**Dr Marcus Tan Chun Jin**  
Consultant



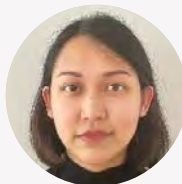
**Dr Sun Chen-Hsin**  
Consultant



**Dr Yuen Yew Sen**  
Consultant



**Dr Wong Meihua  
Wendy**  
Consultant



**Dr Maryanne Chew  
Romero**  
Associate Consultant

## Orthopaedic Surgery



**Prof James Hui**  
Head and Senior  
Consultant  
Department of  
Orthopaedic Surgery



**Dr Melvin Tan  
Kian Loong**  
Consultant  
Clinical discipline:  
Hip and Knee Surgery



**Dr Chua Wei Liang**  
Head (Deputy) and  
Senior Consultant  
Clinical discipline:  
Hip and Knee Surgery



**Dr Bernard Lau**  
Consultant  
Clinical discipline:  
Foot and Ankle Surgery



**Dr Ng Yau Hong**  
Consultant  
Clinical discipline:  
Hip and Knee Surgery



**Dr Joel Louis Lim**  
Consultant  
Clinical discipline:  
Shoulder and Elbow  
Surgery



**Dr Hey Hwee Weng  
Dennis**  
Senior Consultant

Clinical discipline:  
Spine Surgery



**Dr Alex Teo Quok An**  
Associate Consultant

Clinical discipline:  
Spine Surgery



**Dr Jonathan Tan  
Jiong Hao**  
Consultant

Clinical discipline:  
Spine Surgery



**Dr Glen Liao**  
Associate Consultant

Clinical discipline:  
Hip and Knee Surgery



**Adj Asst Prof Lin  
Shuxun**  
Consultant

Clinical discipline:  
Spine Surgery

## Spine Surgery and One-Stop Motion-Preserving Minimally-Invasive Spine Unit (MMSU)



**Dr Hey Hwee Weng Dennis**  
Director and Senior Consultant

Motion-preserving and Minimally-invasive Spine Unit  
Department of Orthopaedic Surgery



**Asst Prof Vincent  
Nga**  
Senior Consultant

Division of  
Neurosurgery



**Dr Ong Say Yang**  
Senior Consultant

Department of  
Anaesthesia



**Dr Gobinathan Chandran**  
Consultant  
Department of Rehabilitation Medicine



**Dr Alex Teo Quok An**  
Associate Consultant  
Department of Orthopaedic Surgery



**Adj Asst Prof Lin Shuxun**  
Consultant  
Motion-preserving and Minimally-invasive Spine Unit  
Department of Orthopaedic Surgery



**Dr Arjun Bolem**  
Associate Consultant  
Division of Neurosurgery



**Dr Jonathan Tan Jiong Hao**  
Consultant  
Department of Orthopaedic Surgery



**Dr Nivedh Dinesh**  
Associate Consultant  
Division of Neurosurgery

## Otolaryngology (Ear, Nose and Throat)



**A/Prof Mark Thong**  
Head and Senior Consultant



**Asst Prof Ker Liang**  
Consultant



**Dr Eunice Kwa**  
Consultant



**Dr Wang Feifan**  
Consultant

## Vascular Surgery



**Dr Rajesh Babu  
Dharmaraj**  
Head and Senior  
Consultant



**Dr Peter Chang**  
Senior Consultant



**A/Prof Jackie Ho Pei**  
Senior Consultant



**Adj Asst Prof Raj  
Menon**  
Senior Consultant

# Other Specialties

## Diagnostic Imaging



**Dr Agrawal Sachin Nandkishore**  
Head and Senior Consultant



**Dr Pavel Singh**  
Deputy Head and Senior Consultant

## NUCOHS Dental Clinic @ AH



**Dr Tan Mei Na**  
Head and Consultant



**Dr Gabriel Lee**  
Dental Surgeon II



**Dr Madeleine Tan**  
Associate Consultant



**Dr Benjamin Wee**  
Dental Surgeon

## Laboratory Medicine



**Dr Ong Lizhen**  
Head and Senior  
Consultant



**Dr Lee Shir Ying**  
Senior Consultant



**Dr Chew Kean Lee**  
Senior Consultant

## Urgent Care Centre



**Dr Keith Ho Weng Hoe**  
Head and Senior  
Consultant



**Dr Chua Mui Teng**  
Senior Consultant



**Dr Benjamin Leong  
Sieu-Hon**  
Senior Consultant



**Asst Prof Gene Chan**  
Senior Consultant



**Dr Chai Chew Yian**  
Senior Consultant



**Dr Ian Mathews**  
Senior Consultant



**Adj Asst Prof Kanwar  
Sudhir Lather**  
Senior Consultant



**Dr Yau Ying Wei**  
Senior Consultant



**Dr Kuan Win Sen**  
Senior Consultant



**Dr Zulkarnain Bin  
Ab Hamid**  
Senior Consultant



**Dr Lee Sock Koon**  
Senior Consultant



**Dr Alexander Ng  
Jet Yue**  
Consultant



**Dr Ong Yeok Kein  
Victor**  
Senior Consultant



**Dr Boon Yuru**  
Consultant



**Dr Rakhee Yash Pal**  
Senior Consultant



**Dr Daniel Chor  
Wei Ping**  
Consultant



**Dr Sim Tiong Beng**  
Senior Consultant



**Dr Cheng Tai Win  
Lenard**  
Consultant





**Dr Jonathan Tang  
Zhe Ying**  
Consultant



**Dr Ong Pei Yui**  
Consultant



**Dr Li Zisheng**  
Consultant



**Dr Soh Harn Wei  
Crystal**  
Consultant



**Dr Lau Thian Phey**  
Consultant



**Dr Yeoh Chew Kiat**  
Consultant



**Dr Lin Jingping**  
Consultant



**Dr Lee Zi Yao**  
Associate Consultant



**Dr Low Jian Wen  
Matthew**  
Consultant



**Dr Nicole Cheung  
Mun Teng**  
Associate Consultant



**Dr Lorraine Yong  
Pei Xian**  
Consultant



# Let us help *SHED* some light on your patient's health

SHED (Social and Health Enabling Destination) is a community health programme in collaboration and co-located with active ageing centres (AACs). We can help you monitor and coach your patients, and assist you with care coordination and referrals to social care providers. Our Care Managers will assist your patient with:



Basic Health and  
Geriatric Assessments



Health Coaching for  
Disease Prevention



Care Referral and  
Coordination



Chronic Disease Monitoring and  
Self-Management Education



General Advance Care  
Planning (ACP) Discussions



Navigating Social Prescriptions  
for Lifestyle Change

SHED is part of the NUHS Community Health Posts programme supporting the Western RHS with care nodes to support your patients.

For enquiries, referrals and appointment-related matters, please contact [AH\\_Community@nuhs.edu.sg](mailto:AH_Community@nuhs.edu.sg) or call: **63706573**.

## ACTIVE GLOBAL CONNECT

31A Ghim Moh Link, #01-11  
Singapore 272031  
Once a month on Monday, 2pm - 5pm

## LIONS BEFRIENDERS ACTIVE AGEING CENTRES

AAC @ Mei Ling 150  
150 Mei Ling Street, #01-53  
Singapore 141150  
Every Thursday, 9am - 12pm

AAC @ Ghim Moh 18  
18 Ghim Moh Road, #01-115  
Singapore 270018  
Every Thursday, 2pm - 5pm

## FAITHACTS

50 Commonwealth Drive, #01-506 Singapore 142050 and  
118 Commonwealth Crescent, #01-23 Singapore 140118  
Every Tuesday\*, 9am - 12pm

\*location alternates every week

Dover Community Centre, 1 Dover Road (Training Room) Singapore 130001 and  
Block 13 Dover Close East Singapore 130013  
Every Friday\*, 9am - 12pm

\*location alternates every week



*Find us!*

\*EXCLUDES PUBLIC HOLIDAYS

# Help Your Patients Take Charge, Take Action To Become Healthier

With the move towards Healthier SG Singapore residents are encouraged to enrol with a family doctor to work on a health plan to improve their health.

Let AH partner you with our Chronic Disease Self-Management Programme (CDSMP), to help your patients with one or more chronic conditions, pick up self-management skills for better health.

Refer your patients to us today!

Discuss with us too on how your Clinic Assistant can be part of this programme to be equipped with a better understanding of what patients with chronic conditions go through to assist you in caring for your patients.

For registration and enquiries, please contact the Alexandra Hospital team:

☎ 9295 9530

✉ [AH\\_Community@nuhs.edu.sg](mailto:AH_Community@nuhs.edu.sg)

#### Operating Hours

Monday to Friday: 9.00am – 5.30pm

Saturday, Sunday and Public Holidays: Closed

## In the six-week CDSMP your patient will learn about:



Management of mild symptoms such as fatigue and difficult emotions



Nutrition and exercise to improve strength, flexibility and endurance



Communicating effectively with family, friends and health professionals



How to evaluate new treatments and understand medication choices



Self-management skills and decision making





## Virtual Care Hotline

 **8181 3288**

Medical care just a call away

Please call this hotline for medical related enquires only, this will help us respond faster to those with a medical need. For change of appointment, billing and other non-medical requests, please call 6908 2222.

## Virtual Care Centre

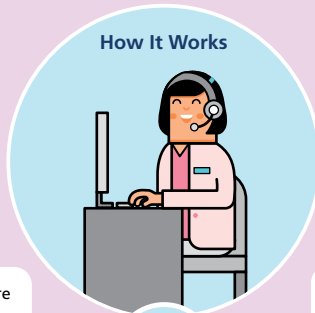
Alexandra Hospital's Virtual Care Centre is a medical helpline staffed by our Care Team, who will be able to advise and link you up with healthcare services based on your care needs after discharge. Our Virtual Care Centre is currently open to all existing patients of Alexandra Hospital. Patients are automatically registered for this service.

### How It Works



1

For follow-up care only, call us at **8181 3288**.  
Operating Hours:  
Mondays – Fridays  
(excluding Public Holidays),  
9am-5.30pm.



2

Let our Care Team know about your medical condition.




3

Our Care Team will assess your condition and advise you on the most appropriate treatment.



**EMBRACE  
AGEING**



EMBRACE by Alexandra Hospital is a community based one-stop geriatric services hub providing comprehensive care to eligible seniors aged 65 years and above.

Are you 65 years old and above?  
Get a one-stop assessment by our Alexandra Hospital's **EMBRACE** team to help you age confidently, healthily and positively.

您是否已年滿或已逾65歲？您可到亞歷山大醫院 **EMBRACE** 團隊進行一站式評估，助您自信、健康、積極地走向高齡歲。

Adakah anda berumur 65 tahun ke atas?  
Dapatkan penilaian sehati oleh pasukan **EMBRACE** di Alexandra Hospital untuk membantu anda menua dengan yakin, sihat dan positif.

65 வயது அல்லது அதற்கும் மேற்பட்டவரா? நீங்கள் ஆரோக்கியமாகவும் ஆக்கப்பூர்வமாகவும் நம்பிக்கையுடனும் முதுமையடையத் துணைபுரியும் வகையில், எங்கள் அலெக்ஸாண்ட்ரா மருத்துவமனையின் **EMBRACE** குழு வழங்கும் முழுமையான பரிசோதனையை ஒரே இடத்தில் பெற்றீடுங்கள்.

**WE OFFER**



**Memory assessment**



**Falls/Fragility fracture risk/  
Functional assessment  
Fear of falls assessment**



**Nutrition assessment**



**Caregiver support**



**Psychosocial assessment**



**Medications review**



**Discussions about wishes  
and preferences for your  
future care**



AH\_GSH@nuhs.edu.sg



Please call our customer service line at 9862 3521. Available from 8.30am to 5.30pm, Monday to Friday (excluding public holidays).



**FaithActs**

50 Commonwealth Dr, #01-506, Singapore 142050

**Lions Befrienders @ 18 Ghim Moh**

18 Ghim Moh Rd, #01-115 Block 18, Singapore 270018

**Lions Befrienders Active Ageing Centre (AAC)**

Blk 420A, Clementi Ave 1, #02-03, Singapore 121420



# A LEGACY OF CARE

CELEBRATING HERITAGE  
AND STEWARDSHIP

1

## PURPOSE

Redesigning  
Healthcare with  
and for Humanity

2

## FOCUSES

Inspired Staff  
Inspired Patients

3

## GAMECHANGERS

Care Model  
Technology  
Infrastructure



# Services at a Glance

We cover a comprehensive suite of medical and surgical specialties, procedures and allied health services.

## Medical Specialties

- Advanced Internal Medicine
- Cardiology
- Dermatology
- Endocrinology
- Gastroenterology
- Geriatric Medicine
- Haematology
- Infectious Diseases
- Neurology
- Nephrology
- Palliative Care Medicine
- Psychological Medicine
- Rehabilitation Medicine
- Respiratory and Critical Care Medicine
- Rheumatology
- Sleep Medicine
- Occupational Medicine
- Family Medicine

## Surgical Specialties

- Anaesthesiology
- General Surgery
  - Breast surgery
  - Colorectal surgery
  - Endocrine surgery
  - Hepatobiliary and pancreatic surgery
  - Hernia and Minimally invasive surgery
  - Upper gastrointestinal surgery
- Hand and Reconstruction Microsurgery
- Gynaecology
- Neurosurgery
- Ophthalmology (Eye)
- Orthopaedic Surgery
  - Motion Preserving Minimally Invasive Spine Unit (MMSU)
- Otolaryngology (Ear, Nose and Throat)
- Plastic, Reconstructive & Aesthetic Surgery
- Urology
- Vascular surgery

## Other Specialties

- Diagnostic and Interventional Radiology
- Emergency Medicine
- Laboratory Medicine
- Dentistry

## Other Services

- Care & Counselling
- Clinical Measurement Centre
- Dietetics
- Endoscopy
- Occupational Therapy
- Physiotherapy
- Podiatry
- Speech Therapy

Scan QR code for a PDF copy



<https://for.sg/specialistdirectory24>

## ALEXANDRA HOSPITAL

378 Alexandra Road Singapore 159964. Tel: (65) 6908 2222



[www.ah.com.sg](http://www.ah.com.sg)



AlexandraHospitalSG

---

Company Registration No.: UEN 53360086C. Copyright (2024). Alexandra Hospital  
All rights reserved. Information is correct at time of printing (March 2024) and subject to  
revision without prior notice.