

Erectile Dysfunction

What is Erectile Dysfunction (ED)?

Erectile Dysfunction (ED) is the inability to achieve or maintain a firm, erect penis for successful sexual intercourse.

What Causes ED?

- Organic - insufficient flow to the penis or insufficient blood retained in the penis after it becomes erect.
- Psychological - emotional disturbances that can affect erection.

How does the medication work?

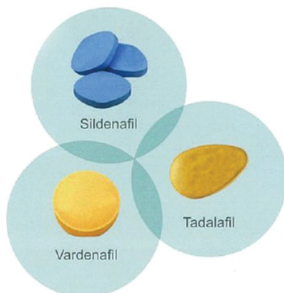
It improves blood flow to the penis when the person is sexually aroused.

Common Side Effects

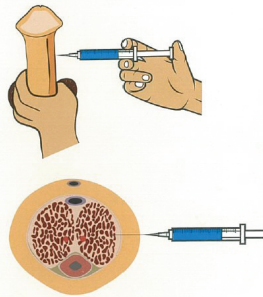
Headaches, dizziness, flushing, visual changes, blocked nose.

Treatment Options

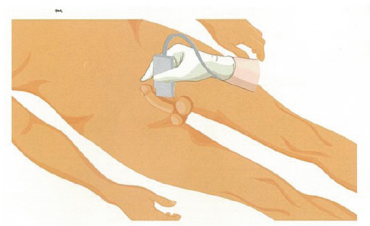
1) Oral Medications



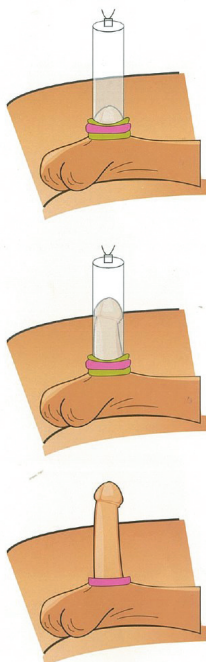
2) Intracavernosal Injection



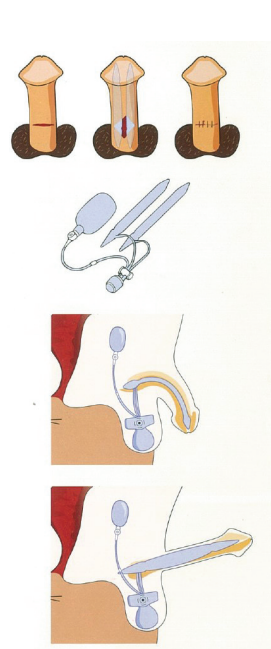
3) Shockwave Therapy



4) Vacuum Erection Device



5) Penile Implant by Surgery



Alexandra Hospital

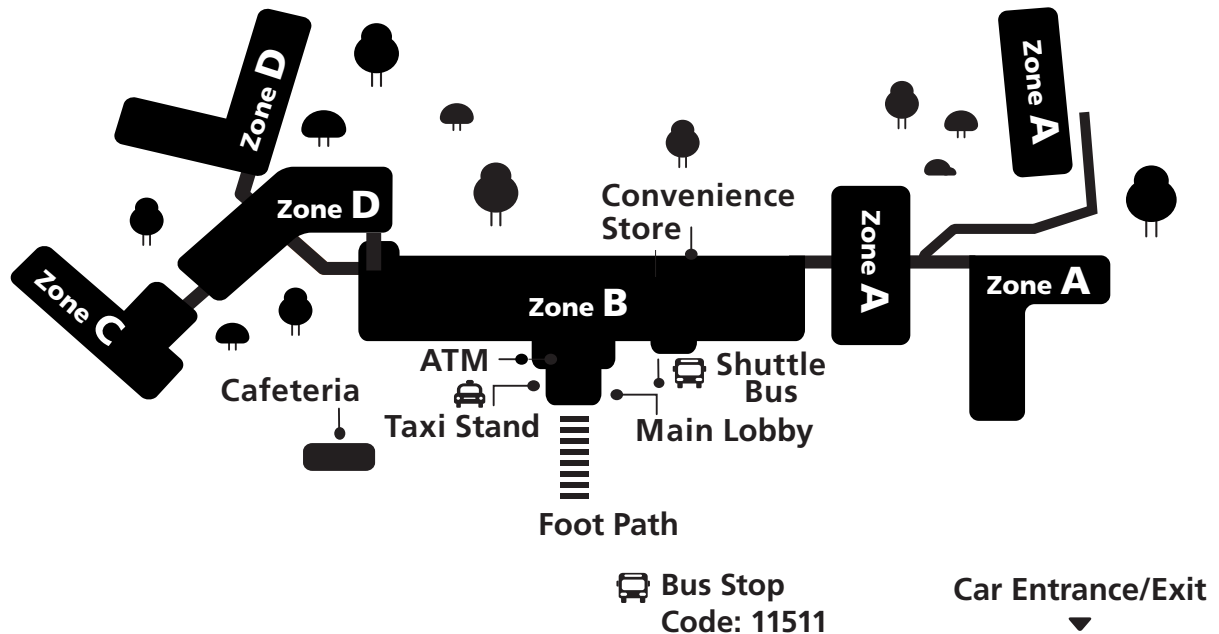
378 Alexandra Road, Singapore 159964

OneNUHS Hotline: (65) 6908 2222

OneNUHS General Enquiries: contactus@nuhs.edu.sg

OneNUHS Appointments: appointment@nuhs.edu.sg

www.ah.com.sg



<https://for.sg/9ce2eu>

Scan the QR code to see the full directory of facilities!

The information in this brochure is meant for educational purposes and should not be used as a substitute for medical diagnosis or treatment. Please seek your doctor's advice before starting any treatment, or if you have any questions related to your health, physical fitness or medical condition.

© 2023, Alexandra Hospital All rights reserved. No part of this publication may be reproduced or shared without prior permission from Alexandra Hospital.

Information is correct at time of printing Feb 2023 and subject to revision without prior notice.